

WHEELLOADER

VAN TUNEN – WHEELLOADER 926

**Empty
weight**
± 13tons

Bucket
± 1.9-5.0m³



Van Tunen Contractor and Rental BV
Zuiderkade 9, 1948NG Beverwijk NL
+31 251 26 44 44 | info@vantunen.nl
www.vantunen.nl



WHEELLOADER

VAN TUNEN – WHEELLOADER 926



OVERVIEW

The CAT 926 set a new standard for productivity, fuel efficiency and comfort. Extremely low sound levels, large spacious cab and intuitive controls keep you working comfortably all day long. The new optimized Z-bar loader linkage delivers the performance and breakout forces of a traditional Z-bar linkage with the parallelism and load handling capability of a tool carrier.

Do more jobs with one machine and equip this wheelloader with a.o.:

- Quick coupler
- Forks
- Sand bucket
- Skeleton buckets
- Rock buckets

PORTFOLIO



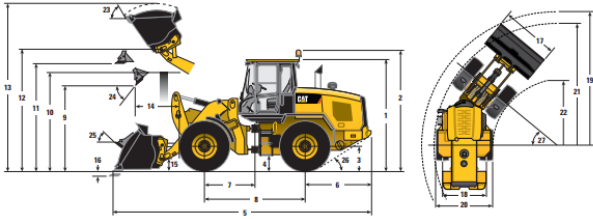
Working @ All over the world

WHEELLOADER

VAN TUNEN – WHEELLOADER 926



Dimensions with Bucket



	Standard Lift					
	926M		930M		938M	
** 1 Height: Ground to Cab	3340 mm	10'11"	3340 mm	10'11"	3340 mm	10'11"
** 2 Height: Ground to Beacon	3707 mm	12'1"	3707 mm	12'1"	3707 mm	12'1"
** 3 Height: Ground Axle Center	685 mm	2'2"	685 mm	2'2"	685 mm	2'2"
** 4 Height: Ground Clearance	397 mm	1'3"	397 mm	1'3"	386 mm	1'3"
* 5 Length: Overall	7451 mm	24'5"	7530 mm	24'8"	7656 mm	25'1"
6 Length: Rear Axle to Bumper	1986 mm	6'6"	1993 mm	6'6"	1968 mm	6'5"
7 Length: Hitch to Front Axle	1500 mm	4'11"	1500 mm	4'11"	1525 mm	5'0"
8 Length: Wheel Base	3000 mm	9'10"	3000 mm	9'10"	3050 mm	10'0"
* 9 Clearance: Bucket at 45°	2885 mm	9'5"	2828 mm	9'3"	2834 mm	9'3"
** 10 Clearance: Load over Height	3330 mm	10'11"	3331 mm	10'11"	3354 mm	11'0"
** 11 Clearance: Level Bucket	3580 mm	11'8"	3580 mm	11'8"	3641 mm	11'11"
** 12 Height: Bucket Pin	3907 mm	12'9"	3907 mm	12'9"	3969 mm	13'0"
** 13 Height: Overall	5076 mm	16'7"	5147 mm	16'10"	5273 mm	17'3"
* 14 Reach: Bucket at 45°	1024 mm	3'4"	1064 mm	3'5"	1146 mm	3'9"
15 Carry Height: Bucket Pin	460 mm	1'6"	460 mm	1'6"	473 mm	1'6"
** 16 Dig Depth	100 mm	3.9"	100 mm	3.9"	101 mm	3.9"
17 Width: Bucket	2550 mm	8'4"	2550 mm	8'4"	2750 mm	9'0"
18 Width: Tread Center	1930 mm	6'3"	1930 mm	6'3"	2083 mm	6'10"
19 Turning Radius: Over Bucket	5924 mm	19'5"	5946 mm	19'6"	6134 mm	20'1"
20 Width: Over Tires	2540 mm	8'4"	2540 mm	8'4"	2693 mm	8'10"
21 Turning Radius: Outside of Tires	5402 mm	17'8"	5402 mm	17'8"	5546 mm	18'2"
22 Turning Radius: Inside of Tires	2851 mm	9'4"	2851 mm	9'4"	2843 mm	9'3"
23 Rack Angle at Full Lift	54°		54°		54°	
24 Dump Angle at Full Lift	50°		49°		49°	
25 Rack Angle at Carry	45°		45°		46°	
26 Departure Angle	33°		33°		33°	
27 Articulation Angle	40°		40°		40°	

Unless otherwise noted, all Standard Lift dimensions and specifications listed are for a machine configured with the following:

Optional Equipment

Full Fluids, 80 kg (176 lb) Operator, Secondary Steering, Ride Control, Crankcase, Power Train and Driveshaft Guards, Bucket with Bolt-on Cutting Edge



FACTS & FIGURES

GENERAL INFORMATION

Engine power:	114kW 155hp
Bucket capacity:	2.9-5.0m ³
Fuel consumption:	± 5-10 ltr/hr
Production:	Contact us

SHIPPING INFORMATION

TOOL	SPECS
Shipping height	± 3.3m
Shipping Length	± 7.4m
Shipping width	± 2.5m
Ground clearance	± 0.39m
Breakout Force	± 106kN
Max. weight	± 13 tons

SPECIALTIES

- Technical Support Van Tunen.
- Rock-, Sandtyres
- Customized attachments

WHEELLOADER

VAN TUNEN – WHEELLOADER 926

Product Safety has been and continues to be proactive in developing machines that meet or exceed safety standards. Safety is an integral part of all machines and system designs.

Focus on QHSE

- Rotating strobe / flash light
- 3-points of contact access
- Back-up alarms with camera

Safety Features

- Cab, pressurized and sound suppressed (ROPS/FOPS)
- Ergonomic cab access ladders and handrails
- Mirrors, heated rearview external with integrated spot mirrors
- Sun visor, rear
- Windows with full guards front, rear and sides (optional)
- Lighting system: – Four halogen work lights (cab mounted)
 - Two LED stop, turn, tail lights
 - Two halogen roading lights (with signals)
 - Two halogen rear vision lights (hood mounted)
- Brakes, full hydraulic enclosed wet-disc with Integrated Braking System (IBS) incl. Brake wear indicators

**“Safety First”
QHSE**