

EXCAVATOR LRE

**VAN TUNEN**

**352 19,6M REACH**



Rather have the digital version? Go to:  
[WWW.VANTUNEN.NL/RENTAL](http://WWW.VANTUNEN.NL/RENTAL)

## EXCAVATOR 'SPECIAL' LRE LONG REACH

OPERATING WEIGHT  
**± 59,4 TONS**

BUCKET  
**± 1.2 - 2.0 m<sup>3</sup>**

# OVERVIEW

## “Load more, make more”

The new Van Tunen - 352 with a 19.6m reach - is built to take on your up-close and far-out excavating tasks. Where the real power comes in is through the integrated engine, hydraulic, and work tool systems. You can move tons of material - literally - every hour, on the hour, all day long with a great deal of speed, precision, and efficiency.

## PORTFOLIO



Undercarriage is designed for High-Impact and High-Travel Applications, Like Mining and Heavy Construction. This model is equipped with 900mm tracked shoes.

## ATTACHMENTS



### BUCKET

- HD GP bucket
- Skeleton buckets
- Ditch cleaning buckets
- Size:  $\pm 1.2 \sim 2.0\text{m}^3$

### GRAB

- Closed (environmental) or regular
- Size:  $\pm 1.2 \sim 2.0\text{m}^3$



### ORANGE PEEL GRAB

- Closed (environmental) or regular
- Size:  $\pm 1.2 \sim 1.5\text{m}^3$



### EXTENDER (HYDRAULIC)

Please note that we can extend the reach of the excavator for your project needs. Same as for all our attachments, we build or customize all these items at our Van Tunen yard. Please ask us for the possibilities.

# FACTS & FIGURES



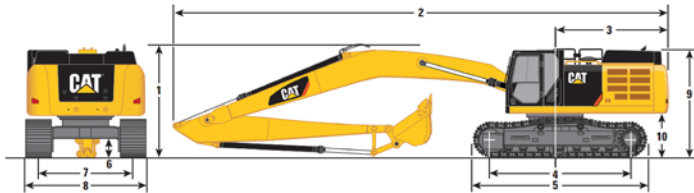
## SPECIALTIES



- Technical Support Van Tunen
- Safety check valves on boom & stick cylinders
- Medium pressure function (rotator)
- High Pressure hydraulic function hamer / shear
- GPS / Survey on request

## DIMENSIONS

Shipping Module dimensions and weights. All dimensions are approximate.



1 Shipping Height*	3530 mm
2 Shipping Length	16 460 mm
3 Tail Swing Radius	3760 mm
4 Length to Center of Rollers	4340 mm
5 Track Length	5380 mm
6 Ground Clearance (including shoe lug height)	710 mm
Ground Clearance (not including shoe lug height)	740 mm
7 Track Gauge	
Expanded	3720 mm
Retracted	3220 mm
8 Transport Width (expanded)	
600 mm Shoes	4320 mm
750 mm Shoes	4470 mm
900 mm Shoes	4620 mm
Transport Width (retracted)	
600 mm Shoes	3820 mm
750 mm Shoes	3970 mm
900 mm Shoes	4120 mm
9 Cab Height	3390 mm
10 Counterweight Clearance**	1450 mm
Bucket Type	GD
Bucket Capacity	0.93 m <sup>3</sup>
Bucket Tip Radius	1573 mm

\*Including shoe lug height.

\*\*Without shoe lug height.

Dimensions may vary depending on bucket selection.

## GENERAL INFORMATION



INFO	SPECS
Engine power	304KW   413hp
Boom length	± 11.5m
Stick length	± 8.5m
Lifting capacity full reach	± 6.5tons
Fuel consumption	± 25-32 ltr/hr
Production	Contact us

## SHIPPING INFORMATION

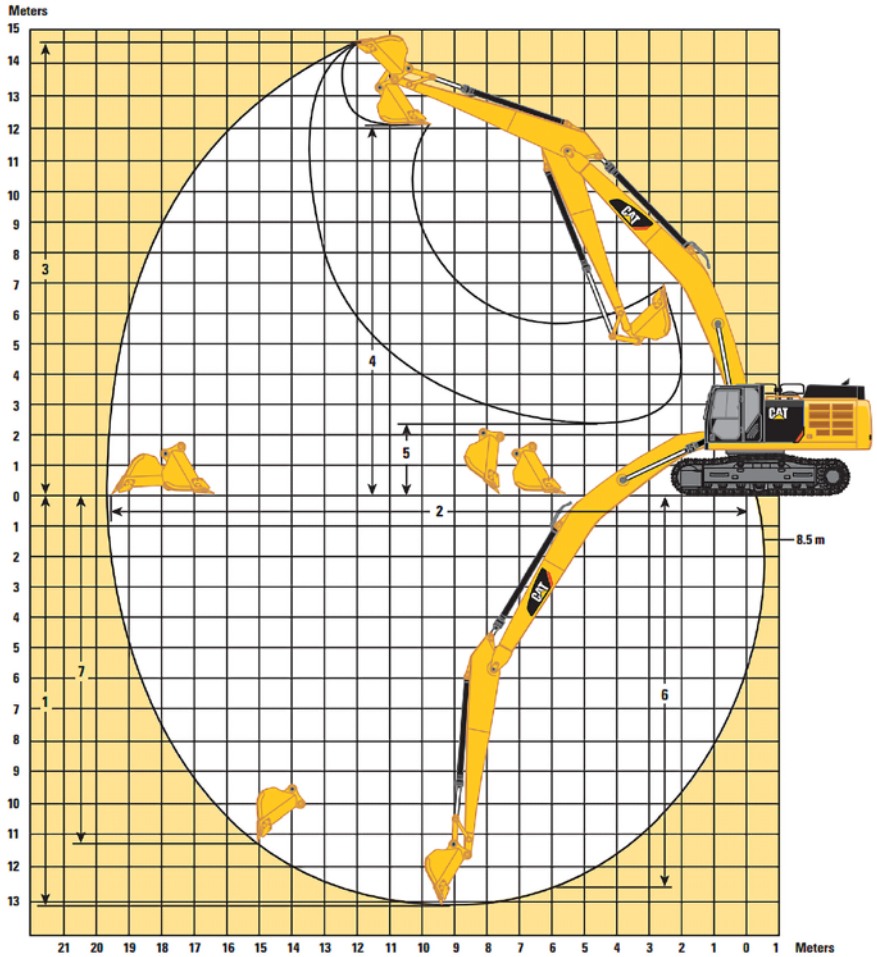


TOOL	SPECS
Shipping height	± 3.5m
Shipping Length	± 16.4m
Max. width (900mm tracks)	± 4.2m
Ground clearance	± 0.71m
Ground pressure	± 6.1N/cm <sup>3</sup>
Max. weight	± 59.4 tons

# EXCAVATOR SPECIFICATIONS

## WORKING RANGES

All dimensions are approximate.



## SAFETY FIRST - QHSE



### A SAFE, QUIET CAB

The ROPS cab provides you with a safe working environment. It also contributes to your comfort because it's attached to a reinforced frame with special viscous mounts that limit vibration and unnecessary sound. Add in special roof lining and sealing and you have a cab that's as quiet inside as any of today's top pickup trucks.

### SECURE CONTACT POINTS

Multiple large steps get you into the cab as well as a leg up to the compartments. Extended hand and guard rails allow you to safely climb to the upper deck. Anti-skid plates reduce your slipping hazards in all types of weather conditions, and they can be removed for cleaning.

### GREAT VIEWS

Ample glass gives you excellent visibility out front and to the side, and the standard rearview camera gives you a clear field of view behind the machine through the cab monitor. The available split-configuration windshield features an upper window with handles that make it easy to slide and store above you and a lower window that can be removed and stored on the inside wall of the cab. The large skylight also serves as an emergency exit and provides you with enhanced overhead visibility.

### SMART LIGHTING

Halogen lights provide plenty of illumination, and the cab and boom lights can be programmed to stay on for up to 90 seconds after the engine has been turned off to help you safely exit the machine. Optional High Intensity Discharge (HID) lights are available for enhanced night-time visibility.





### **REQUIRE THIS MACHINE FOR YOUR PROJECT?**

Please contact us for a competitive quotation or for further information about our customized solutions. Feel free to give us a call **+31 251 26 44 44**, send us an e-mail **info@vantunen.nl** or visit **[www.vantunen.nl](http://www.vantunen.nl)**

# Experts in coastal development, earthmoving, rock works and mining

Van Tunen provides worldwide contract, rental and support services for the dredging, earthmoving and mining industry as well as the maritime sector. From harbour improvement and extension (including excavation and breakwater construction) to coastal protection, pipeline works and mining activities, depend on our team for solid advice, made-to-measure solutions and prompt support.

Get to know us, please visit:

[www.vantunen.nl](http://www.vantunen.nl)



#### Contact us

+31 251 26 44 44  
info@vantunen.nl  
www.vantunen.nl

#### Visit us

Zuiderkade 9  
1948 NG Beverwijk  
The Netherlands

#### About us

Registration nr. 34056786  
VAT nr. NL00 706 8797 B01