

WHELLOADER

VAN TUNEN

980



Rather have the digital version? Go to:

WWW.VANTUNEN.NL/RENTAL

WHELLOADER

BUCKET
 $\pm 4.0 - 12.2 \text{ m}^3$

OPERATING WEIGHT
 $\pm 31 \text{ TONS}$

OVERVIEW

Reliability - ready to work!

The CAT980 features many of the components designed and proven reliable over generations of product design. This machine is designed to improve operator comfort, performance, and productivity. The Performance Series Buckets enhance visibility and decrease cycle times.

Do more jobs with one machine and equip this wheelloader with a.o.:

- Quick coupler
- Forks
- Sand bucket
- Skeleton buckets
- Rock buckets

ATTACHMENTS



PORTFOLIO



Working at: all over the world.

FACTS & FIGURES



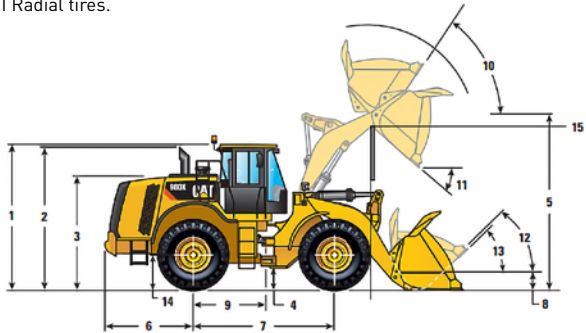
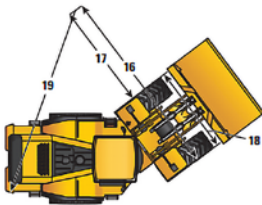
SPECIALTIES

- Technical Support Van Tunen
- Rock-, Sandtyres
- Customized attachments



DIMENSIONS

All dimensions are approximate and based on L4 Michelin 29.5R25 XLDDI Radial tires.



1 Height to Top of Rops	3809 mm	12'6"
2 Height to Top of Exhaust Pipe	3737 mm	12'4"
3 Height to Top of Hood	3109 mm	10'2"
4 Ground Clearance With 29.5R25 (See Tire Option Chart for Other Tires)	460 mm	1'6"
5 B-Pin Height - Standard	4539 mm	14'11"
B-Pin Height - High-Lift	4760 mm	15'7"
6 Center Line of Rear Axle to Edge of Counterweight	2510 mm	8'2"
7 Wheelbase	3700 mm	12'1"
8 B-Pin Height @ Carry - Standard	673 mm	2'0"
9 Center Line of Rear Axle to Hitch	1850 mm	6'1"
10 Rack Back @ Maximum Lift	61 degrees	
11 Dump Angle @ Maximum Lift	52 degrees	
12 Rack Back @ Carry	49 degrees	
13 Rack Back @ Ground	41 degrees	
14 Height to Center Line of Axle	885 mm	2'11"
15 Lift Arm Clearance	3795 mm	12'6"
Lift Arm Clearance @ High Lift	4041 mm	13'4"

GENERAL INFORMATION



INFO	SPECS
Engine power	317KW 425hp
Bucket capacity	4.0-12.2m ³
Fuel consumption	± 20-32 ltr/hr
Production	Contact us

SHIPPING INFORMATION



TOOL	SPECS
Shipping height	± 3.8m
Shipping Length	± 9.8m
Shipping width	± 3.3m
Ground clearance	± 0.46m
Breakout Force	± 238kN
Max. weight	± 31 tons

SAFETY FIRST - QHSE



Product Safety has been and continues to be proactive in developing machines that meet or exceed safety standards. Safety is an integral part of all machines and system designs.

FOCUS ON QHSE

- Rotating strobe / flash light
- 3-points of contact access
- Back-up alarms with camera

SAFETY FEATURES

- Cab, pressurized and sound suppressed (ROPS/ FOPS)
- Door remote opening system
- Ergonomic cab access ladders and handrails
- Mirrors, heated rearview external with integrated spod mirrors
- Steering, EH joystick, speed sensing with force feedback
- Sun visor, rear
- Windows with full guards frond, rear and sides
- Lighting system:
 - Four halogen work lights (cab mounted)
 - Two LED stop, turn, tail lights
 - Two halogen roading lights (with signals)
 - Two halogen rear vision lights (hood mounted)
- Alarm, back-up
- Brakes, full hydraulic enclosed wet-disc with Integrated Braking System (IBS) incl. Brake wear indicators



REQUIRE THIS MACHINE FOR YOUR PROJECT?

Please contact us for a competitive quotation or for further information about our customized solutions. Feel free to give us a call **+31 251 26 44 44**, send us an e-mail info@vantunen.nl or visit www.vantunen.nl

Experts in coastal development, earthmoving, rock works and mining

Van Tunen provides worldwide contract, rental and support services for the dredging, earthmoving and mining industry as well as the maritime sector. From harbour improvement and extension (including excavation and breakwater construction) to coastal protection, pipeline works and mining activities, depend on our team for solid advice, made-to-measure solutions and prompt support.

Get to know us, please visit:

www.vantunen.nl



Contact us

+31 251 26 44 44
info@vantunen.nl
www.vantunen.nl

Visit us

Zuiderkade 9
1948 NG Beverwijk
The Netherlands

About us

Registration nr. 34056786
VAT nr. NL00 706 8797 B01