

BULLDOZER

# VAN TUNEN D6 (LGP)



Rather have the digital version? Go to:  
[WWW.VANTUNEN.NL/RENTAL](http://WWW.VANTUNEN.NL/RENTAL)

## BULLDOZER



OPERATING WEIGHT  
± 23 TONS

## OVERVIEW

The Cat D6T dozer has earned a global reputation for outstanding versatility. The CAT D6 dozer is available from XW, XL or LGP configurations, and of course we can equip this machine to your project needs to a wide range of blade, undercarriage, track and rear implement. The D6T has the pushing power you want for heavy dozing applications and the fine control you need for finish grading - all in one easy-to-transport machine.

## PORTFOLIO



Working at: all over the world.



Working at reclamation

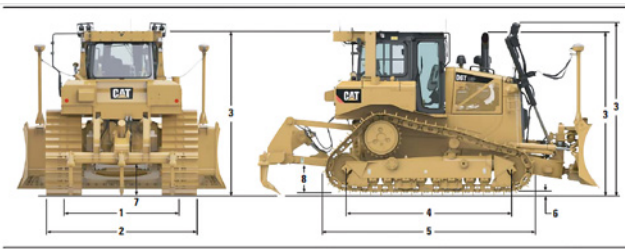


# FACTS & FIGURES



## DIMENSIONS

All dimensions are approximate.



	XL	XW	LGP
1 Track gauge	1880 mm 6 ft 2 in	2032 mm 6 ft 8 in	2286 mm 7 ft 6 in
2 Width of tractor over transitions	2690 mm 8 ft 10 in	2944 mm 9 ft 8 in	3480 mm 11 ft 5 in
Width of tractor without transmissions (standard track)	2390 mm 8 ft 6 in	2792 mm 9 ft 2 in	3261 mm 10 ft 8 in
3 Machine height** from top of grouser:			
ROPS	3185 mm 10 ft 5 in	3185 mm 10 ft 5 in	3235 mm 10 ft 7 in
Premium Light Package	3341 mm 11 ft 0 in	3341 mm 11 ft 0 in	3097 mm 11 ft 1 in
Height to top of Sweeps (not shown)	3199 mm 10 ft 6 in	3199 mm 10 ft 6 in	3249 mm 10 ft 8 in
4 Length of track on ground	2860 mm 9 ft 5 in	2860 mm 9 ft 5 in	3270 mm 10 ft 9 in
5 Length of basic tractor	4250 mm 13 ft 9 in	4250 mm 13 ft 9 in	4546 mm 14 ft 11 in
With following attachments add:			
Drawbar	218 mm 9 in	218 mm 9 in	229 mm 9 in
Ripper Multi-thick (tip at ground line)	1785 mm 4 ft 7 in	1395 mm 4 ft 7 in	1239 mm 4 ft 2 in
Winch	570 mm 22 in	570 mm 22 in	435 mm 17 in
S Blade	---	---	947 mm 3 ft 1 in
SU Blade	1068 mm 3 ft 6 in	1068 mm 3 ft 6 in	---
A Blade	1007 mm 3 ft 4 in	1068 mm 3 ft 6 in	1305 mm 4 ft 4 in
A Blade angled approximately 25° for transport	837 mm 33 in	889 mm 35 in	989 mm 38.9 in
6 Height of grouser	45 mm 2.6 in	45 mm 2.6 in	45 mm 2.6 in
7 Ground clearance	372 mm 15 in	372 mm 15 in	406 mm 16 in
Oscillation at front idler	141 mm 5.5 in	137 mm 5.4 in	163 mm 6.4 in
Track pitch	203 mm 8 in	203 mm 8 in	203 mm 8 in
Number of shoes per side	41	41	45
Track rollers/carrier rollers per side	7/1	7/1	8/1
Standard shoe width (moderate service)	560 mm 22 in	760 mm 30 in	915 mm 36 in
Ground contact area (standard track) <sup>†</sup>	3.54 m <sup>2</sup> 5.489 m <sup>2</sup>	4.81 m <sup>2</sup> 7.449 m <sup>2</sup>	6.53 m <sup>2</sup> 10.122 m <sup>2</sup>
Ground pressure <sup>†</sup>	58.1 kPa 8.4 psi	44.5 kPa 6.4 psi	34.4 kPa 4.99 psi
8 Drawbar height	576 mm 23 in	576 mm 23 in	626 mm 25 in
From ground face of shoe	511 mm 20 in	511 mm 20 in	561 mm 22 in

\*All dimensions above with SystemOne undercarriage. XL and XW with SU blade, LGP with S blade with no rear attachments unless otherwise specified and calculated per ISO 16754.

## GENERAL INFORMATION



INFO	SPECS
Engine power	171KW   229hp
Fuel consumption	± 25-35 ltr/hr
Production	Contact us

## SHIPPING INFORMATION



TOOL	SPECS
Shipping height	± 3.2m
Shipping Length	± 4.6m
Shipping width (915mm tracks)	± 3.2m
Ground clearance	± 0.38m
Ground pressure	± 0.40kg/cm <sup>3</sup>
Max. weight	± 23 tons

## SPECIALTIES



- Technical Support Van Tunen
- Operational
  - (Wide) range of blades (coal/sand/ rock)
  - Undercarriage options (a.o. LGP)
  - Rear implement (a.o ripper, winch)
  - Multiple Track options

## SAFETY FIRST - QHSE



Product Safety has been and continues to be proactive in developing machines that meet or exceed safety standards. Safety is an integral part of all machines and system designs.

### SAFETY FEATURES

- Redesigned guard rail enhances safety when fueling, filling Diesel Exhaust Fluid or cleaning rear windows
- Convenient steps and handles help you get on and off the tractor with greater ease. The optional premium lighting package adds access lighting with a ground level switch
- Well appointed cabs with good visibility help operators stay focused and aware
- A standard Operator Presence detection system allows the machine to idle when the operator is not seated, but locks out the power train and front implements to avoid unintentional movement
- A rear vision camera is available to enhance visibility behind the machine
- Easy open engine enclosure doors allow you to maintain three points of contact for added safety
- Backup alarm



### REQUIRE THIS MACHINE FOR YOUR PROJECT?

Please contact us for a competitive quotation or for further information about our customized solutions. Feel free to give us a call **+31 251 26 44 44**, send us an e-mail [info@vantunen.nl](mailto:info@vantunen.nl) or visit [www.vantunen.nl](http://www.vantunen.nl)

# Experts in coastal development, earthmoving, rock works and mining

Van Tunen provides worldwide contract, rental and support services for the dredging, earthmoving and mining industry as well as the maritime sector. From harbour improvement and extension (including excavation and breakwater construction) to coastal protection, pipeline works and mining activities, depend on our team for solid advice, made-to-measure solutions and prompt support.

Get to know us, please visit:

[www.vantunen.nl](http://www.vantunen.nl)



#### Contact us

+31 251 26 44 44  
info@vantunen.nl  
www.vantunen.nl

#### Visit us

Zuiderkade 9  
1948 NG Beverwijk  
The Netherlands

#### About us

Registration nr. 34056786  
VAT nr. NL00 706 8797 B01