

EXCAVATOR STANDARD

VAN TUNEN 336-340



Rather have the digital version? Go to:

WWW.VANTUNEN.NL/RENTAL

EXCAVATOR 'STANDARD'



OPERATING WEIGHT
± 36 TONS

OVERVIEW

“Load more, make more”

The 336 is built to keep your production numbers up and your owning and operating costs down. Not only does the machine's C9.3 engine meet U.S.EPA Tier 4 Final emission standards, but it does so while giving you all the power, fuel efficiency, and reliability you need to succeed. If productivity, comfort, versatility, and fuel efficiency are what you want, the 336F excavator is what you need.

PORTFOLIO



The 336 undercarriage contributes significantly to its outstanding stability and durability. Track shoes, links, rollers, idlers, and final drives are all built with long-lasting, high-tensile-strength steel.

ATTACHMENTS



BUCKET

- HD GP bucket
- Skeleton buckets
- Coalhandling bucket
- Extreme Duty Rock buckets
- Size: $\pm 2.2 \sim 2.7 \text{ m}^3$

GRAB

- Closed (environmental) or regular
- Size: $\pm 1.5 \sim 2.5 \text{ m}^3$



ORANGE PEEL GRAB

- Closed (environmental) or regular
- Size: $\pm 1.2 \sim 1.5 \text{ m}^3$



EXTENDER (HYDRAULIC)

Please note that we can extend the reach of the excavator for your project needs. Same as for all our attachments, we build or customize all these items at our Van Tunen yard. Please ask us for the possibilities.

FACTS & FIGURES



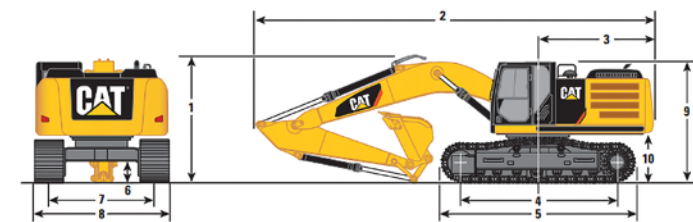
SPECIALTIES

- Technical Support Van Tunen
- Safety check valves on boom & stick cylinders
- Medium pressure function (rotator)
- High Pressure hydraulic function hamer / shear
- GPS / Survey on request



DIMENSIONS

All dimensions are approximate.



Stick	Extreme Service and Heavy Duty Reach Booms 6.50 m (21'4")		Mass Boom 6.18 m (20'3")
	R3.9DB (12'10")	R3.2DB (10'8")	M2.55TB (8'4")
	mm (ft)	mm (ft)	mm (ft)
1 Shipping Height (with Shoe Lug Height)	3660 (12'0")	3510 (11'6")	3600 (11'10")
2 Shipping Length	11 170 (36'8")	11 160 (36'7")	10 890 (35'9")
3 Tail Swing Radius	3470 (11'5")	3470 (11'5")	3470 (11'5")
4 Length to Center of Rollers			
Long Undercarriage	4040 (13'3")	4040 (13'3")	4040 (13'3")
5 Track Length			
Long Undercarriage	5030 (16'6")	5030 (16'6")	5030 (16'6")
6 Ground Clearance			
With Shoe Lug Height	510 (1'8")	510 (1'8")	510 (1'8")
Without Shoe Lug Height	480 (1'7")	480 (1'7")	480 (1'7")
7 Track Gauge			
Long Undercarriage	2590 (8'6")	2590 (8'6")	2590 (8'6")
8 Transport Width			
Long/Std U/C – 700 mm (28") Shoes	3290 (10'10")	3290 (10'10")	3290 (10'10")
Long/Std U/C – 800 mm (32") Shoes	3390 (11'1")	3390 (11'1")	3390 (11'1")
Long/Std U/C – 850 mm (34") Shoes	3440 (11'3")	3440 (11'3")	3440 (11'3")
9 Cab Height	3150 (10'4")	3150 (10'4")	3150 (10'4")
Cab Height with Top Guard	3360 (11'0")	3360 (11'0")	3360 (11'0")
10 Counterweight Clearance (without Shoe Lug Height)	1220 (4'0")	1220 (4'0")	1220 (4'0")

GENERAL INFORMATION



INFO	SPECS
Engine power	226KW 303hp
Baseboom length	6.5m
Stick length	3.2m
Lifting capacity full reach	± 5 tons
Fuel consumption	± 25-32 ltr/hr
Production	Contact us

SHIPPING INFORMATION

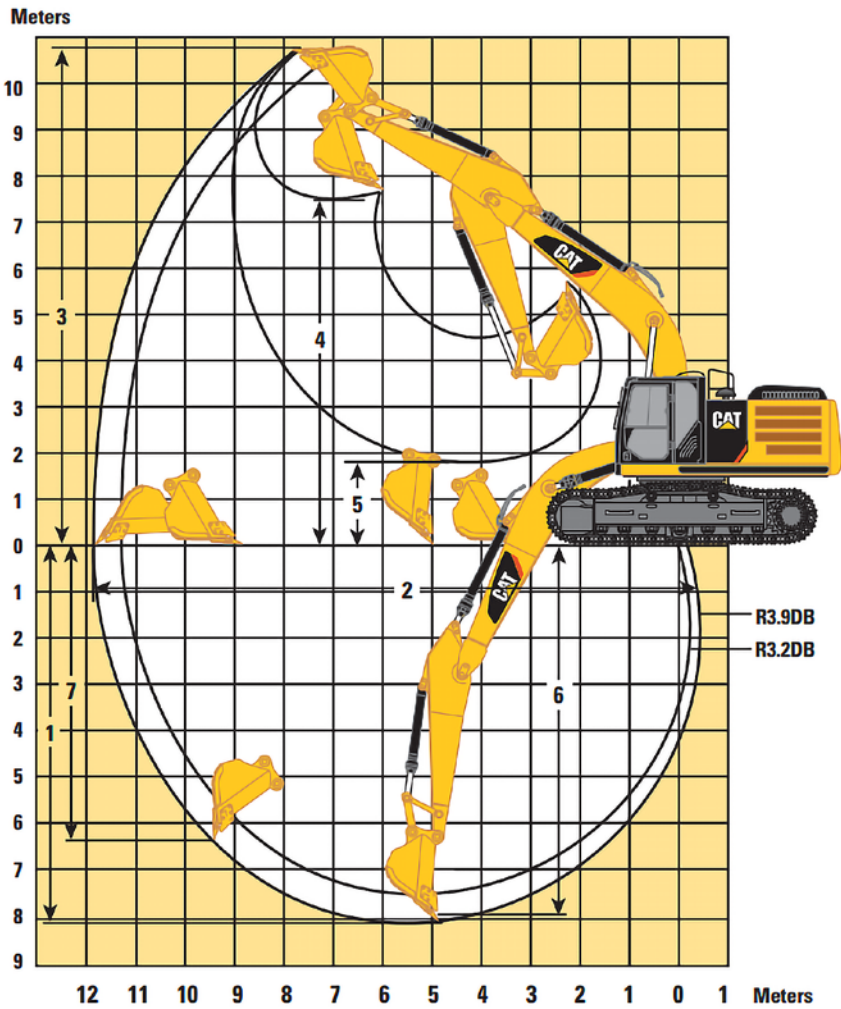


TOOL	SPECS
Shipping height	± 3.6m
Shipping Length	± 11.7m
Shipping width (850mm tracks)	± 3.4m
Ground clearance	± 0.51m
Ground pressure	± 5.0 N/cm²
Max. weight	± 40.1 tons

EXCAVATOR SPECIFICATIONS

WORKING RANGES

All dimensions are approximate.



SAFETY FIRST - QHSE



A SAFE, QUIET CAB

The ROPS cab provides you with a safe working environment. It also contributes to your comfort because it's attached to a reinforced frame with special viscous mounts that limit vibration and unnecessary sound. Add in special roof lining and sealing and you have a cab that's as quiet inside as any of today's top pickup trucks.

SECURE CONTACT POINTS

Multiple large steps get you into the cab as well as a leg up to the compartments. Extended hand and guard rails allow you to safely climb to the upper deck. Anti-skid plates reduce your slipping hazards in all types of weather conditions, and they can be removed for cleaning.

GREAT VIEWS

Ample glass gives you excellent visibility out front and to the side, and the standard rearview camera gives you a clear field of view behind the machine through the cab monitor. The available split-configuration windshield features an upper window with handles that make it easy to slide and store above you and a lower window that can be removed and stored on the inside wall of the cab. The large skylight also serves as an emergency exit and provides you with enhanced overhead visibility.

SMART LIGHTING

Halogen lights provide plenty of illumination, and the cab and boom lights can be programmed to stay on for up to 90 seconds after the engine has been turned off to help you safely exit the machine. Optional High Intensity Discharge (HID) lights are available for enhanced night-time visibility.





REQUIRE THIS MACHINE FOR YOUR PROJECT?

Please contact us for a competitive quotation or for further information about our customized solutions. Feel free to give us a call **+31 251 26 44 44**, send us an e-mail **info@vantunen.nl** or visit **www.vantunen.nl**

Experts in coastal development, earthmoving, rock works and mining

Van Tunen provides worldwide rental of heavy earthmoving equipment and technical project support services for the dredging, earthmoving and mining industry as well as the maritime sector. From harbour improvement to coastal protection, from pipeline works to demolition, depend on our team for solid advice, made-to-measure solutions and prompt support.

Get to know us, please visit:

www.vantunen.nl



Contact us

+31 251 26 44 44
info@vantunen.nl
www.vantunen.nl

Visit us

Zuiderkade 9
1948 NG Beverwijk
The Netherlands

About us

Registration nr. 34056786
VAT nr. NL00 706 8797 B01