

EXCAVATOR STANDARD

# VAN TUNEN 365-374



Rather have the digital version? Go to:

[WWW.VANTUNEN.NL/RENTAL](http://WWW.VANTUNEN.NL/RENTAL)

## EXCAVATOR 'STANDARD'

OPERATING WEIGHT  
± 75 TONS

BUCKET  
± 2.5 - 4.6 m<sup>3</sup>

# OVERVIEW

The Van Tunen 374 has excellent control, high stick and bucket forces, impressive lift capacity, simplified service and a comfortable operator station to increase your productivity and lower operating costs. High level of sustained production, improved trenching and pipe-laying performance and with all the variety of work tools this machine is a multitask machine on your project!

## PORTFOLIO



## ATTACHMENTS



### BUCKET

- HD GP bucket
- Skeleton buckets
- Coal handling bucket
- Extreme Duty Rock buckets
- Size:  $\pm 2.5 \sim 4.6\text{m}^3$

### GRAB

- Closed (environmental) or regular
- Size:  $\pm 2.5 \sim 4.5\text{m}^3$



### ORANGE PEEL GRAB

- Closed (environmental) or regular
- Size:  $\pm 1.2 \sim 1.8\text{m}^3$



### EXTENDER (HYDRAULIC)

Please note that we can extend the reach of the excavator for your project needs. Same as for all our attachments, we build or customize all these items at our Van Tunen yard. Please ask us for the possibilities.

# FACTS & FIGURES



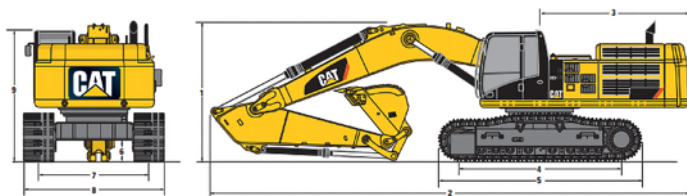
## SPECIALTIES



- Technical Support Van Tunen
- Safety check valves on boom & stick cylinders
- Medium pressure function (rotator)
- High Pressure hydraulic function hamer / shear
- GPS / Survey on request

## DIMENSIONS

All dimensions are approximate.



Stick	Reach Boom 7.8 m (25'7")				Mass Boom 7.0 m (23'0")	
	R4.67 m (15'4")	R4.15 m (13'7")	R3.6 m (11'10")	R2.84 m (9'4")	M3.0 m (9'10")	M2.57 m (8'5")
1 Shipping Height	4950 mm (163')	4620 mm (15'2")	4480 mm (14'8")	4250 mm (13'11")	4700 mm (15'5")	4610 mm (15'1")
2 Shipping Length	13 230 mm (43'5")	13 310 mm (43'8")	13 320 mm (43'8")	13 430 mm (44'1")	12 630 mm (41'5")	12 670 mm (41'7")
3 Tail Swing Radius	4015 mm (13'2")	4015 mm (13'2")	4015 mm (13'2")	4015 mm (13'2")	4015 mm (13'2")	4015 mm (13'2")
4 Length to Center of Rollers	4705 mm (15'5")	4705 mm (15'5")	4705 mm (15'5")	4705 mm (15'5")	4705 mm (15'5")	4705 mm (15'5")
5 Track Length	5870 mm (19'3")	5870 mm (19'3")	5870 mm (19'3")	5870 mm (19'3")	5870 mm (19'3")	5870 mm (19'3")
6 Ground Clearance	840 mm (2'9")	840 mm (2'9")	840 mm (2'9")	840 mm (2'9")	840 mm (2'9")	840 mm (2'9")
7 Track Gauge (Shipping)*	2750 mm (9'0")	2750 mm (9'0")	2750 mm (9'0")	2750 mm (9'0")	2750 mm (9'0")	2750 mm (9'0")
8 Transport Width**	3500 mm (11'6")	3500 mm (11'6")	3500 mm (11'6")	3500 mm (11'6")	3500 mm (11'6")	3500 mm (11'6")
9 Cab Height	3540 mm (11'7")	3540 mm (11'7")	3540 mm (11'7")	3540 mm (11'7")	3540 mm (11'7")	3540 mm (11'7")

\* Track gauge in extended (working) position: 3410 mm (11'2").

\*\* Transport width shown for 750 mm (30 in).

Add 150 mm (6 in) for 900 mm (36 in) shoes.

Subtract 100 mm (4 in) for 650 mm (26 in) shoes.

## GENERAL INFORMATION



INFO	SPECS
Engine power	355KW   476hp
Baseboom length	7.8m
Stick length	3.6m
Lifting capacity full reach	± 14 tons
Fuel consumption	± 45-55 ltr/hr
Production	Contact us

## SHIPPING INFORMATION



TOOL	SPECS
Shipping height	± 3.5m
Shipping Length	± 13.3m
Shipping width (900mm tracks)	± 4.7m
Ground clearance	± 0.84m
Ground pressure	± 7.7N/cm³
Max. weight	± 75 tons



## SAFETY FIRST - QHSE



### A SAFE, QUIET CAB

The ROPS cab provides you with a safe working environment. It also contributes to your comfort because it's attached to a reinforced frame with special viscous mounts that limit vibration and unnecessary sound. Add in special roof lining and sealing and you have a cab that's as quiet inside as any of today's top pickup trucks.

### SECURE CONTACT POINTS

Multiple large steps get you into the cab as well as a leg up to the compartments. Extended hand and guard rails allow you to safely climb to the upper deck. Anti-skid plates reduce your slipping hazards in all types of weather conditions, and they can be removed for cleaning.

### GREAT VIEWS

Ample glass gives you excellent visibility out front and to the side, and the standard rearview camera gives you a clear field of view behind the machine through the cab monitor. The available split-configuration windshield features an upper window with handles that make it easy to slide and store above you and a lower window that can be removed and stored on the inside wall of the cab. The large skylight also serves as an emergency exit and provides you with enhanced overhead visibility.

### SMART LIGHTING

Halogen lights provide plenty of illumination, and the cab and boom lights can be programmed to stay on for up to 90 seconds after the engine has been turned off to help you safely exit the machine. Optional High Intensity Discharge (HID) lights are available for enhanced night-time visibility.



### **REQUIRE THIS MACHINE FOR YOUR PROJECT?**

Please contact us for a competitive quotation or for further information about our customized solutions. Feel free to give us a call **+31 251 26 44 44**, send us an e-mail **info@vantunen.nl** or visit **[www.vantunen.nl](http://www.vantunen.nl)**

# Experts in coastal development, earthmoving, rock works and mining

Van Tunen provides worldwide rental of heavy earthmoving equipment and technical project support services for the dredging, earthmoving and mining industry as well as the maritime sector. From harbour improvement to coastal protection, from pipeline works to demolition, depend on our team for solid advice, made-to-measure solutions and prompt support.

Get to know us, please visit:

[www.vantunen.nl](http://www.vantunen.nl)



#### Contact us

+31 251 26 44 44  
[info@vantunen.nl](mailto:info@vantunen.nl)  
[www.vantunen.nl](http://www.vantunen.nl)

#### Visit us

Zuiderkade 9  
1948 NG Beverwijk  
The Netherlands

#### About us

Registration nr. 34056786  
VAT nr. NL00 706 8797 B01