

EXCAVATOR STANDARD

VAN TUNEN 385-390



Rather have the digital version? Go to:
WWW.VANTUNEN.NL/RENTAL

EXCAVATOR 'STANDARD'



BUCKET
 $\pm 2.5 - 6.5 \text{ m}^3$

OPERATING WEIGHT
 $\pm 86.3 \text{ TONS}$

OVERVIEW

The Van Tunen 390 is a well-built machine designed to give you a very long service life. When it comes to moving heavy material quickly and efficiently, you need hydraulic horsepower - the type of ground-breaking power the 390 can deliver. Auxiliary hydraulics give you greater tool versatility so you can take on more work with just one machine, and there are several options from which you can choose. A quick coupler circuit, for example, will allow you to switch from one tool to another in a matter of minutes - all from the comfort and convenience of the cab.

PORTFOLIO



ATTACHMENTS

BUCKET

- HD GP bucket
- Skeleton buckets
- Coal handling bucket
- Extreme Duty Rock buckets
- Size: $\pm 2.5 - 6.5\text{m}^3$



GRAB

- Closed (environmental) or regular
- Size: $\pm 1.5 - 6.0\text{m}^3$



ORANGE PEEL GRAB

- Closed (environmental) or regular
- Size: $\pm 1.5 - 3.5\text{m}^3$



EXTENDER (HYDRAULIC)

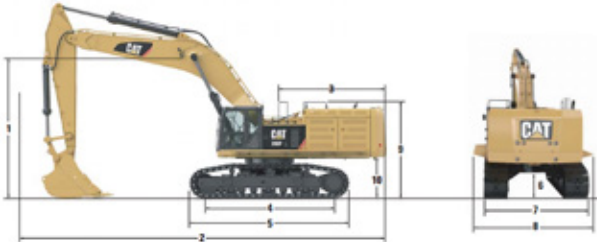
Please note that we can extend the reach of the excavator for your project needs. Same as for all our attachments, we build or customize all these items at our Van Tunen yard. Please ask us for the possibilities.

FACTS & FIGURES



DIMENSIONS

All dimensions are approximate.



Boom Options	Reach Boom 16.8 m (55'10")				GP Boom 8.4 m (27'7")			Max Boom 7.25 m (23'9")	
Stick Options	R5.5HR2 (18'1")	R4.4HR2 (14'3")	R5.5HR2 (18'1")	R4.4HR2 (14'3")	GP3.4JC (11'2")	GP2.5JC (8'7")	M3.4JC (11'2")	M2.5JC (8'7")	
1 Shipping Height	mm 5490* 5070* 5840** 5290**	mm 5160** 5000** 5310*** 4890***	ft 18'0** 16'8** 19'2*** 17'4***	ft 16'11*** 16'3*** 17'5*** 16'0***	5000** 5160** 5310*** 4890***	4890** 4400*** 4350***	17'5*** 16'0***		
2 Shipping Length	mm 16 290* 16 330* 14 500** 14 690**	mm 14 720** 14 930** 13 530*** 13 690***	ft 53'5* 53'7* 47'7** 48'2**	ft 48'2** 49'0** 44'0*** 43'9***	14 720** 14 930** 13 530*** 13 690***				
3 Tail Swing Radius	mm 4700* 4700* 4700** 4700**	mm 4700** 4700** 4700*** 4700***	ft 15'5** 15'5** 15'3*** 15'3***	ft 15'3*** 15'3*** 15'3*** 15'3***	4700* 4700* 4700** 4700**	4700** 4700** 4700*** 4700***			
4 Length to Center of Rollers – Long Undercarriage	mm 5120 5120 5120 5120	mm 5120 5120 5120 5120	ft 16'10* 16'10* 16'10* 16'10*	ft 16'10* 16'10* 16'10* 16'10*	5120 5120 5120 5120	5120 5120 5120 5120	5120 5120 5120 5120		
5 Track Length – Long Undercarriage	mm 6358 6358 6358 6358	mm 6358 6358 6358 6358	ft 20'10* 20'10* 20'10* 20'10*	ft 20'10* 20'10* 20'10* 20'10*	6358 6358 6358 6358	6358 6358 6358 6358	6358 6358 6358 6358		
6 Ground Clearance	mm 900 900 900 900	mm 900 900 900 900	ft 2'11" 2'11" 2'11" 2'11"	ft 2'11" 2'11" 2'11" 2'11"	900 900 900 900	900 900 900 900	900 900 900 900		
7 Track Gauge – Long Undercarriage (Shipping)***	mm 2750 2750 2750 2750	mm 2750 2750 2750 2750	ft 9'0" 9'0" 9'0" 9'0"	ft 9'0" 9'0" 9'0" 9'0"	2750 2750 2750 2750	2750 2750 2750 2750	2750 2750 2750 2750		
8 Transport Width – Long Undercarriage									
650 mm (24 in) Shoes	mm 4160 4160 4160 4160	mm 4160 4160 4160 4160	ft 13'6" 13'6" 13'6" 13'6"	ft 13'6" 13'6" 13'6" 13'6"	4160 4160 4160 4160	4160 4160 4160 4160	4160 4160 4160 4160		
750 mm (30 in) Shoes	mm 4260 4260 4260 4260	mm 4260 4260 4260 4260	ft 14'0" 14'0" 14'0" 14'0"	ft 14'0" 14'0" 14'0" 14'0"	4260 4260 4260 4260	4260 4260 4260 4260	4260 4260 4260 4260		
900 mm (35 in) Shoes	mm 4410 4410 4410 4410	mm 4410 4410 4410 4410	ft 14'6" 14'6" 14'6" 14'6"	ft 14'6" 14'6" 14'6" 14'6"	4410 4410 4410 4410	4410 4410 4410 4410	4410 4410 4410 4410		
9 Counterweight Clearance	mm 3830 3830 3830 3830	mm 3830 3830 3830 3830	ft 12'7" 12'7" 12'7" 12'7"	ft 12'7" 12'7" 12'7" 12'7"	3830 3830 3830 3830	3830 3830 3830 3830	3830 3830 3830 3830		
10 Counterweight Clearance	mm 1640 1640 1640 1640	mm 1640 1640 1640 1640	ft 5'5" 5'5" 5'5" 5'5"	ft 5'5" 5'5" 5'5" 5'5"	1640 1640 1640 1640	1640 1640 1640 1640	1640 1640 1640 1640		

*With 3.0 m³ (3.1 yd³) bucket and 750 mm (30 in) shoes.

**With 4.8 m³ (5.0 yd³) bucket and 750 mm (30 in) shoes.

***With 6.8 m³ (7.84 yd³) bucket and 750 mm (30 in) shoes.

****Track gauge in extended (working) position: 3510 mm (11.52 ft).

GENERAL INFORMATION



INFO	SPECS
Engine power	391KW 524hp
Baseboom length	8.4m
Stick length	4.4m
Lifting capacity full reach	± 15 tons
Fuel consumption	± 50-65 ltr/hr
Production	Contact us

SHIPPING INFORMATION



TOOL	SPECS
Shipping height	± 3.8m
Shipping Length	± 14.5m
Shipping width (900mm tracks)	± 3.8m
Ground clearance	± 0.9m
Ground pressure	± 8.8 N/cm ²
Max. weight	± 86.3 tons

SPECIALTIES

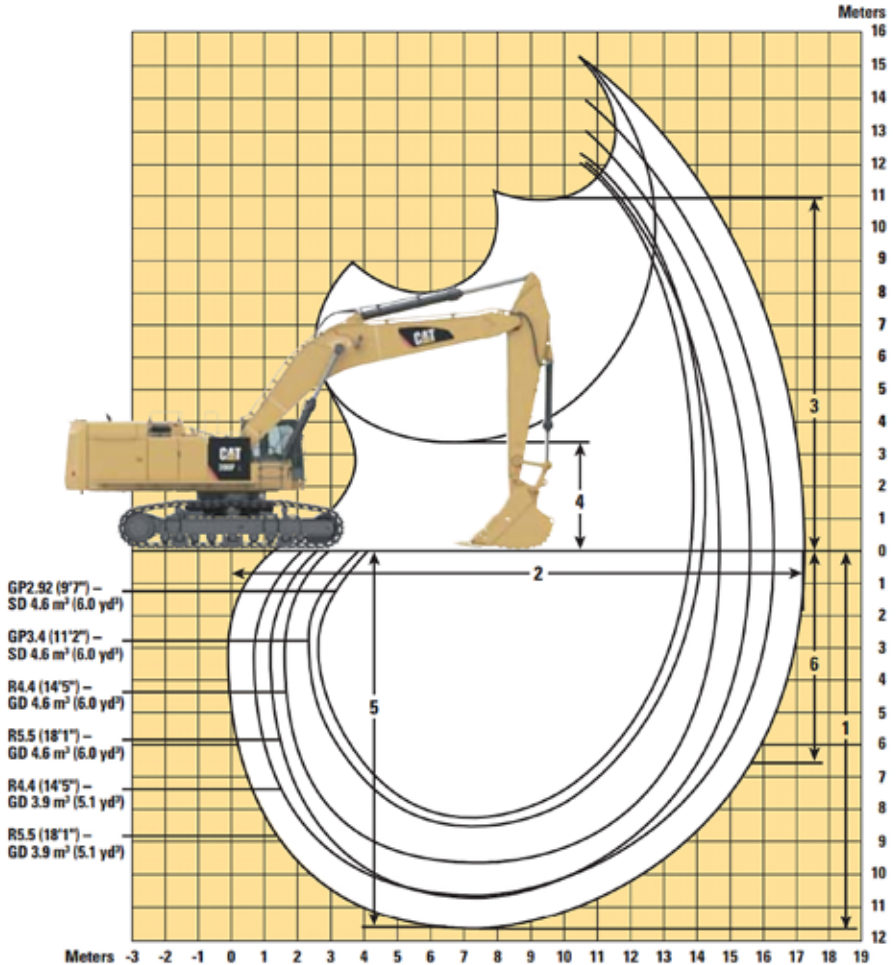


- Technical Support Van Tunen
- Safety check valves on boom & stick cylinders
- Medium pressure function (rotator)
- High Pressure hydraulic function hamer / shear
- GPS / Survey on request

EXCAVATOR SPECIFICATIONS

WORKING RANGES

All dimensions are approximate.



SAFETY FIRST - QHSE



A SAFE, QUIET CAB

The ROPS cab provides you with a safe working environment. It also contributes to your comfort because it's attached to a reinforced frame with special viscous mounts that limit vibration and unnecessary sound. Add in special roof lining and sealing and you have a cab that's as quiet inside as any of today's top pickup trucks.

SECURE CONTACT POINTS

Multiple large steps get you into the cab as well as a leg up to the compartments. Extended hand and guard rails allow you to safely climb to the upper deck. Anti-skid plates reduce your slipping hazards in all types of weather conditions, and they can be removed for cleaning.

GREAT VIEWS

Ample glass gives you excellent visibility out front and to the side, and the standard rearview camera gives you a clear field of view behind the machine through the cab monitor. The available split-configuration windshield features an upper window with handles that make it easy to slide and store above you and a lower window that can be removed and stored on the inside wall of the cab. The large skylight also serves as an emergency exit and provides you with enhanced overhead visibility.

SMART LIGHTING

Halogen lights provide plenty of illumination, and the cab and boom lights can be programmed to stay on for up to 90 seconds after the engine has been turned off to help you safely exit the machine. Optional High Intensity Discharge (HID) lights are available for enhanced night-time visibility.





REQUIRE THIS MACHINE FOR YOUR PROJECT?

Please contact us for a competitive quotation or for further information about our customized solutions. Feel free to give us a call **+31 251 26 44 44**, send us an e-mail **info@vantunen.nl** or visit **www.vantunen.nl**

Experts in coastal development, earthmoving, rock works and mining

Van Tunen provides worldwide rental of heavy earthmoving equipment and technical project support services for the dredging, earthmoving and mining industry as well as the maritime sector. From harbour improvement to coastal protection, from pipeline works to demolition, depend on our team for solid advice, made-to-measure solutions and prompt support.

Get to know us, please visit:

www.vantunen.nl



Contact us

+31 251 26 44 44
info@vantunen.nl
www.vantunen.nl

Visit us

Zuiderkade 9
1948 NG Beverwijk
The Netherlands

About us

Registration nr. 34056786
VAT nr. NL00 706 8797 B01