

DUMPTRUCK

# VAN TUNEN 740-745



Rather have the digital version? Go to:  
[WWW.VANTUNEN.NL/RENTAL](http://WWW.VANTUNEN.NL/RENTAL)

## ARTICULATED DUMPTRUCK

RATED PAYLOAD  
± 43,5 TONS

EMPTY WEIGHT  
± 23.7 TONS

## OVERVIEW

The CAT 740 / 745 with a 23-25 m<sup>3</sup> body and a payload of 40-45 tons has proven itself to be a reliable, durability and high productive machine. Spacious two-person cab with forward facing trainer/passenger seat, will be suitable for the dedicated Van Tunen Operator-training. With a superior cost-efficiency ratio and a focus on high productivity this large articulated dumptruck could be the ultimate machine for your project.

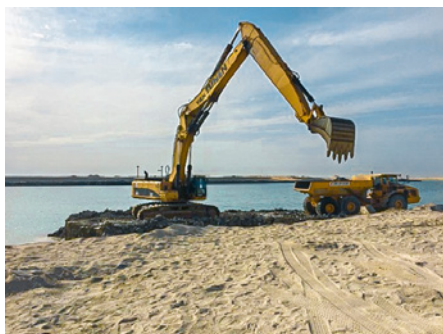
## PORTFOLIO



Working at: The Netherlands - Earlyadapter on ADT's.



Working at: rockworks.

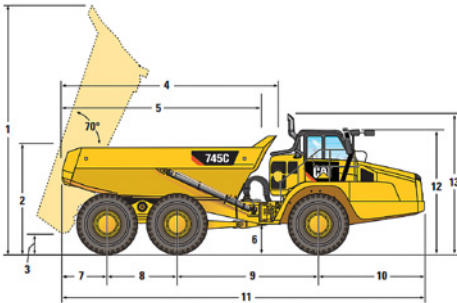


# FACTS & FIGURES



## DIMENSIONS

All dimensions are approximate.



	mm	ft/in		mm	ft/in
1	7302	22'11"	11 *	11 429	37'5"
2	3165	10'4"	12 **	11 555	37'10"
3	772	2'6"	13	3746	12'3"
4	6447	21'1"	14	4041	13'3"
5	5889	19'3"	15 ***	4166	13'8"
6	579	1'10"	16 ****	3422	11'2"
7	1458	4'9"	17 †	3774	12'4"
8	1966	6'5"	18 ††	2687	8'9"
9	4590	15'0"	19 †††	3370	11'0"
10	3415	11'2"		3530	11'6"

## GENERAL INFORMATION



INFO	SPECS
Engine power	376KW
Body capacity	18 heaped m <sup>3</sup>
Fuel consumption	± 25-40 ltr/hr
Production	Contact us

## SHIPPING INFORMATION



TOOL	SPECS
Shipping height	± 3.75m
Shipping Length	± 11.5m
Shipping width	± 3.50m
Max. empty weight	± 32.8 tons

## SPECIALTIES



- Technical Support  
Van Tunen
- Production increase:  
various options possible  
like body extension/ side  
extension etc.
- W&T
  - Rockliners
  - Clayliners
  - Body heating
- Configuration options:
  - Bare frame,  
Blockframe, Flatbed
  - Waterwagon,  
Fuelwagon
  - Eject body
  - Sandbucket
  - Rockbucket (special/  
customized)
  - Swamp-, Rock-, Sand  
tyres

## SAFETY FIRST - QHSE



Product Safety has been and continues to be proactive in developing machines that meet or exceed safety standards. Safety is an integral part of all machines and system designs.

### FOCUS ON QHSE

- Rotating strobe / flash light
- 3-points of contact access
- Back-up alarms with camera
- Flagman



### REQUIRE THIS MACHINE FOR YOUR PROJECT?

Please contact us for a competitive quotation or for further information about our customized solutions. Feel free to give us a call **+31 251 26 44 44**, send us an e-mail [info@vantunen.nl](mailto:info@vantunen.nl) or visit [www.vantunen.nl](http://www.vantunen.nl)

### SAFETY FEATURES

- Product Safety Caterpillar has been and continues to be proactive in developing machines that meet or exceed safety standards. Safety is an integral part of all machines and system designs. Safety Features
- Cab integral ROPS (Roll Over Protection System) and FOPS (Falling Object Protection System)
- Rearview camera system incorporated into the CMPD, can provide a continuous panoramic rear view or when reverse gear is selected
- The secondary and parking brake functions are spring applied and hydraulic released
- Electro-hydraulic secondary steering system automatically activates in forward/reverse or when stationary if low pressure is sensed. Can be manually selected for machine recovery purposes.
- Ground level external engine fuel cut off switch provides easy access outside of the machine
- External electrical system disconnect switch for easy access from outside of the machine
- Slip resistant walkways - punched steel plate
- 75 mm [3 in] wide seat belts for operator/trainer and passenger
- Wide angled mirrors for excellent rear visibility + additional mirrors (optional)
- Sweeping hood design for panoramic forward visibility
- Extensive handrails
- Body raised visual indicator
- LED-flashing beacon
- Maximum speed limiter
- Internal and external grab handles
- Fully raised body locking pin
- Reversing indicator
- Park brake switch safety lock

# Experts in coastal development, earthmoving, rock works and mining

Van Tunen provides worldwide rental of heavy earthmoving equipment and technical project support services for the dredging, earthmoving and mining industry as well as the maritime sector. From harbour improvement to coastal protection, from pipeline works to demolition, depend on our team for solid advice, made-to-measure solutions and prompt support.

Get to know us, please visit:

[www.vantunen.nl](http://www.vantunen.nl)



#### Contact us

+31 251 26 44 44  
info@vantunen.nl  
www.vantunen.nl

#### Visit us

Zuiderkade 9  
1948 NG Beverwijk  
The Netherlands

#### About us

Registration nr. 34056786  
VAT nr. NL00 706 8797 B01