

OFF-HIGHWAY TRUCK

# VAN TUNEN 770



Rather have the digital version? Go to:

[WWW.VANTUNEN.NL/RENTAL](http://WWW.VANTUNEN.NL/RENTAL)

## OFF-HIGHWAY TRUCK



770G

RATED PAYLOAD  
 $\pm 46.3$  TONS

EMPTY WEIGHT  
 $\pm 37.7$  TONS

# OVERVIEW

## Engineered for performance, designed for comfort, built to last

The CAT 770 series has been developed specially for construction, mining and quarry applications. The 770 optimizes demands for lower cost and quality control technologies, combine these keywords and you have a reliable-durable-dependable machine on your project. With this truck your project can be more productive, spend less time on maintenance, and support the environment with new levels of eco performance.

## PORTFOLIO



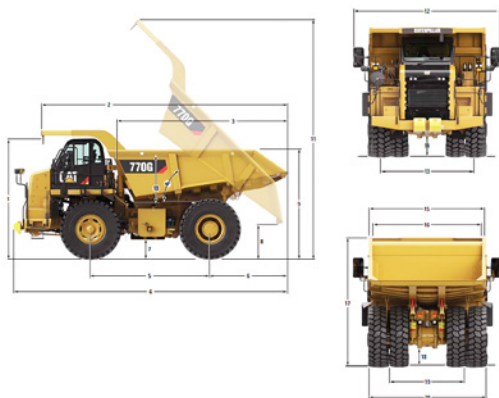
Working at: all over the world.

# FACTS & FIGURES



## DIMENSIONS

All dimensions are approximate with dual slope body.



|    |                                 |         |         |
|----|---------------------------------|---------|---------|
| 1  | Height to Top of ROPS           | 3857 mm | 12.7 ft |
| 2  | Overall Body Length             | 8199 mm | 26.8 ft |
| 3  | Inside Body Length              | 5635 mm | 18.5 ft |
| 4  | Overall Length                  | 8796 mm | 28.9 ft |
| 5  | Wheelbase                       | 3960 mm | 13.0 ft |
| 6  | Rear Axle to Tail               | 2586 mm | 8.5 ft  |
| 7  | Ground Clearance                | 518 mm  | 1.6 ft  |
| 8  | Dump Clearance                  | 506 mm  | 1.7 ft  |
| 9  | Loading Height – Empty          | 3147 mm | 10.3 ft |
| 10 | Inside Body Depth – Maximum     | 1404 mm | 4.6 ft  |
| 11 | Overall Height – Body Raised    | 8255 mm | 27.1 ft |
| 12 | Operating Width                 | 4780 mm | 15.7 ft |
| 13 | Centerline Front Tire Width     | 3110 mm | 10.2 ft |
| 14 | Engine Guard Clearance          | 335 mm  | 1.8 ft  |
| 15 | Outside Body Width              | 3931 mm | 12.9 ft |
| 16 | Inside Body Width               | 3627 mm | 11.9 ft |
| 17 | Front Canopy Height             | 4114 mm | 13.5 ft |
| 18 | Rear Axle Clearance             | 548 mm  | 1.8 ft  |
| 19 | Centerline Rear Dual Tire Width | 2536 mm | 8.3 ft  |
| 20 | Overall Tire Width              | 3693 mm | 12.1 ft |

## GENERAL INFORMATION



| INFO             | SPECS                      |
|------------------|----------------------------|
| Engine power     | 384KW   515hp              |
| Body capacity    | 25.2 heaped m <sup>3</sup> |
| Fuel consumption | ± 30-45 ltr/hr             |
| Production       | Contact us                 |

## SHIPPING INFORMATION



| TOOL              | SPECS       |
|-------------------|-------------|
| Shipping height   | ± 3.8m      |
| Shipping Length   | ± 8.7m      |
| Max. width        | ± 3.6m      |
| Max. empty weight | ± 32.7 tons |

## SPECIALTIES



- Technical Support Van Tunen
- Production increase: various options possible like body extension/ side extension etc.
- W&T
  - Rockliners
  - Body heating
- Configuration options:
  - Bare frame, Blockframe, Flatbed
  - Flat floor body
  - Dual slope body
  - Waterwagon, Fuelwagon

# SAFETY FIRST - QHSE



Product Safety has been and continues to be proactive in developing machines that meet or exceed safety standards. Safety is an integral part of all machines and system designs.

## A FOCUS ON PERSONNEL

The 770 is designed to minimize hazards associated with working on and around this truck.

- Ground level daily check points
- Low effort, integrated access system with hand rails for three points of contact
- Aggressive tread plate on all step areas, and lighting for after dark
- Folding windshield washing platform offers solid footing for cleaning the windshield

## CONFIDENCE AND CONTROL

Confident operators will move material quickly, efficiently and profitably.

- Brake design updates increase slope holding capability and include a brake wear indicator
- Wet disc braking for rear wheels; dry disc braking on the front
- Automatic Retarding Control for downhill grades
- New traction control system

## VISIBILITY

The 770 supports your site safety plan with excellent visibility to the job site.

- Work Area Vision System (WAVS) is a camera system that enhances visibility behind the truck
- Lighting and mirror packages are available to suit your site conditions



## REQUIRE THIS MACHINE FOR YOUR PROJECT?

Please contact us for a competitive quotation or for further information about our customized solutions. Feel free to give us a call **+31 251 26 44 44**, send us an e-mail [info@vantunen.nl](mailto:info@vantunen.nl) or visit [www.vantunen.nl](http://www.vantunen.nl)

# Experts in coastal development, earthmoving, rock works and mining

Van Tunen provides worldwide rental of heavy earthmoving equipment and technical project support services for the dredging, earthmoving and mining industry as well as the maritime sector. From harbour improvement to coastal protection, from pipeline works to demolition, depend on our team for solid advice, made-to-measure solutions and prompt support.

Get to know us, please visit:

[www.vantunen.nl](http://www.vantunen.nl)



#### Contact us

+31 251 26 44 44  
[info@vantunen.nl](mailto:info@vantunen.nl)  
[www.vantunen.nl](http://www.vantunen.nl)

#### Visit us

Zuiderkade 9  
1948 NG Beverwijk  
The Netherlands

#### About us

Registration nr. 34056786  
VAT nr. NL00 706 8797 B01