

OFF-HIGHWAY TRUCK

# VAN TUNEN 777



Rather have the digital version? Go to:  
[WWW.VANTUNEN.NL/RENTAL](http://WWW.VANTUNEN.NL/RENTAL)

## OFF-HIGHWAY TRUCK



RATED PAYLOAD  
 $\pm 99.6$  TONS

EMPTY WEIGHT  
 $\pm 67.1$  TONS

## OVERVIEW

The CAT 777 is a representation of a new era for this size class from Caterpillar. This machine has been manufactured for reliability, economical solutions and it offers comfort. This product has over 30,000 hours of proven performance in the hands of customers prior to production. With this truck your project can be more productive and spend less time on maintenance.

## PORTFOLIO



Working at: all over the world..

# FACTS & FIGURES



## GENERAL INFORMATION



INFO	SPECS
Engine power	765KW/ 1.025hp
Body capacity	64.1 heaped m <sup>3</sup>
Fuel consumption	± 65-77 ltr/hr
Production	Contact us

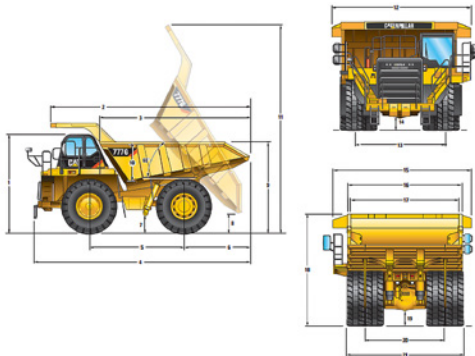
## SHIPPING INFORMATION



TOOL	SPECS
Shipping height	± 4.7m
Shipping Length	± 10.5m
Max. width	± 5.2.m
Max. empty weight	± 67.1 tons

## DIMENSIONS

All dimensions are approximate.



## SPECIALTIES



- Technical Support Van Tunen
- Production increase: various options possible like body extension/ side extension etc.
- W&T
  - Body heating
- Configuration options:
  - Bare frame, Blockframe, Flatbed
  - Waterwagon, Fuelwagon

	Dual Slope		X Body		Coal Body 1		Coal Body 2	
1 Height to Top of ROPS	4730 mm	15.50 ft	4730 mm	15.50 ft	4730 mm	15.50 ft	4730 mm	15.50 ft
2 Overall Body Length	9830 mm	32.20 ft	10 070 mm	33.04 ft	10 274 mm	33.71 ft	10 445 mm	34.27 ft
3 Inside Body Length	6580 mm	21.50 ft	7037 mm	23.09 ft	7562 mm	24.81 ft	7734 mm	25.37 ft
4 Overall Length	10 535 mm	34.50 ft	10 758 mm	35.30 ft	10 968 mm	35.98 ft	11 140 mm	36.55 ft
5 Wheelbase	4560 mm	14.90 ft	4560 mm	14.96 ft	4560 mm	14.96 ft	4560 mm	14.96 ft
6 Rear Axle to Tail	3062 mm	10.00 ft	3263 mm	10.71 ft	3473 mm	11.39 ft	3644 mm	11.96 ft
7 Ground Clearance	896 mm	2.90 ft	896 mm	2.94 ft	896 mm	2.94 ft	896 mm	2.94 ft
8 Dump Clearance	965 mm	3.10 ft	893 mm	2.93 ft	935 mm	3.07 ft	821 mm	2.69 ft
9 Loading Height – Empty	4380 mm	14.30 ft	4429 mm	14.53 ft	4851 mm	15.92 ft	5321 mm	17.46 ft
10 Inside Body Depth – Maximum	1895 mm	6.20 ft	1777 mm	5.83 ft	2223 mm	7.29 ft	2693 mm	8.84 ft
11 Overall Height – Body Raised	9953 mm	32.60 ft	10 071 mm	33.04 ft	10 319 mm	33.85 ft	10 319 mm	33.85 ft
12 Operating Width	6687 mm	21.90 ft	6687 mm	21.94 ft	6706 mm	22.00 ft	6706 mm	22.00 ft
13 Front Tire Width	4170 mm	13.60 ft	4170 mm	13.68 ft	4170 mm	13.68 ft	4170 mm	13.68 ft
14 Engine Guard Clearance	864 mm	2.80 ft	864 mm	2.83 ft	864 mm	2.83 ft	864 mm	2.83 ft
15 Overall Canopy Width	6200 mm	20.30 ft	6200 mm	20.34 ft	6404 mm	21.01 ft	6404 mm	21.01 ft
16 Outside Body Width	5524 mm	18.10 ft	5682 mm	18.64 ft	6365 mm	20.88 ft	6368 mm	20.89 ft
17 Inside Body Width	5200 mm	17.00 ft	5450 mm	17.88 ft	6150 mm	20.18 ft	6150 mm	20.18 ft
18 Front Canopy Height	5200 mm	17.00 ft	5370 mm	17.62 ft	5840 mm	19.16 ft	5840 mm	19.16 ft
19 Rear Axle Clearance	902 mm	2.90 ft	902 mm	2.96 ft	902 mm	2.96 ft	902 mm	2.96 ft
20 Rear Dual Tire Width	3576 mm	11.70 ft	3576 mm	11.73 ft	3576 mm	11.73 ft	3576 mm	11.73 ft
21 Overall Tire Width	5223 mm	17.10 ft	5223 mm	17.14 ft	5223 mm	17.14 ft	5223 mm	17.14 ft

## SAFETY FIRST - QHSE



Product Safety has been and continues to be proactive in developing machines that meet or exceed safety standards. Safety is an integral part of all machines and system designs.

### A FOCUS ON PERSONNEL

The 777 is designed to minimize hazards associated with working on and around this truck.

- Ground level daily check points
- Low effort, integrated access system with hand rails for three points of contact
- Aggressive tread plate on all step areas, and lighting for after dark
- Folding windshield washing platform offers solid footing for cleaning the windshield

### CONFIDENCE AND CONTROL

Confident operators will move material quickly, efficiently and profitably.

- Brake design updates increase slope holding capability and include a brake wear indicator
- Wet disc braking for rear wheels; dry disc braking on the front
- Automatic Retarding Control for downhill grades
- New traction control system

### VISIBILITY

The 777 supports your site safety plan with excellent visibility to the job site.

- Work Area Vision System (WAVS) is a camera system that enhances visibility behind the truck
- Lighting and mirror packages are available to suit your site conditions



### REQUIRE THIS MACHINE FOR YOUR PROJECT?

Please contact us for a competitive quotation or for further information about our customized solutions. Feel free to give us a call **+31 251 26 44 44**, send us an e-mail [info@vantunen.nl](mailto:info@vantunen.nl) or visit [www.vantunen.nl](http://www.vantunen.nl)

# Experts in coastal development, earthmoving, rock works and mining

Van Tunen provides worldwide rental of heavy earthmoving equipment and technical project support services for the dredging, earthmoving and mining industry as well as the maritime sector. From harbour improvement to coastal protection, from pipeline works to demolition, depend on our team for solid advice, made-to-measure solutions and prompt support.

Get to know us, please visit:

[www.vantunen.nl](http://www.vantunen.nl)



#### Contact us

+31 251 26 44 44  
info@vantunen.nl  
www.vantunen.nl

#### Visit us

Zuiderkade 9  
1948 NG Beverwijk  
The Netherlands

#### About us

Registration nr. 34056786  
VAT nr. NL00 706 8797 B01