

MATERIAL HANDLER

# VAN TUNEN 835M



Rather have the digital version? Go to:

[WWW.VANTUNEN.NL/RENTAL](http://WWW.VANTUNEN.NL/RENTAL)

## MATERIAL HANDLER

OPERATING WEIGHT  
 $\pm 44.5$  TONS



GRAB  
 $\pm 1.5 - 2.5$  m<sup>3</sup>

# OVERVIEW

The Van Tunen 835M material handler is specially designed for the increased demands of high-performance operation, productivity and output. This machine is perfect for loading, move/handle material and sort-and-load activities. To rent this machine with multiple attachments that help you do all kinds of jobs, you will have the best machine for the job.

## PORTFOLIO



## ATTACHMENTS

### GRAB

- Closed (environmental) or regular
- Size:  $\pm 1.5 \sim 2.5\text{m}^3$



### ORANGE PEEL GRAB

- Closed (environmental) or regular
- Size:  $\pm 1.5 \sim 2.5\text{m}^3$



Please note that we can extend the reach of the excavator for your project needs. Same as for all our attachments, we build or customize all these items at our Van Tunen yard. Please ask us for the possibilities.



## SPECS

Engine power	<b>224KW   305hp</b>
K16 boom reach	<b>15.69m</b>
Boom	<b>9.1m</b>
Stick	<b>6.9m</b>
Fuel consumption	<b>± 12-16 ltr/hr</b>
Production	<b>Contact us</b>

## SHIPPING INFORMATION



**SPECS**

Shipping height	± 3.4m
Shipping Length	± 6.1m
Shipping width	± 3.0m
Width + outrigger	± 4.8m
Ground clearance	± 0.37m
Weight	± 44.5 tons

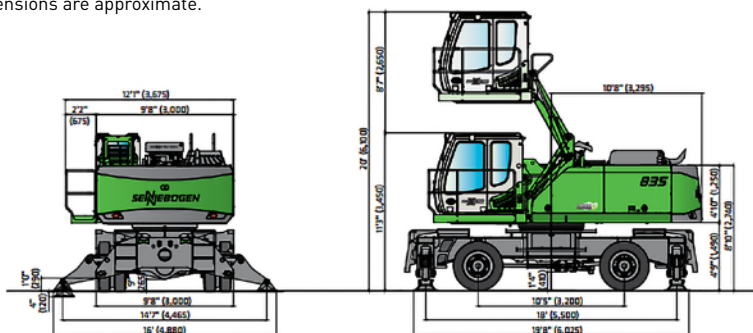
## SPECIALTIES



- Technical Support Van Tunen
- Safety check valves on boom & stick cylinders
- K17 up to K21 boom

## DIMENSIONS

All dimensions are approximate.



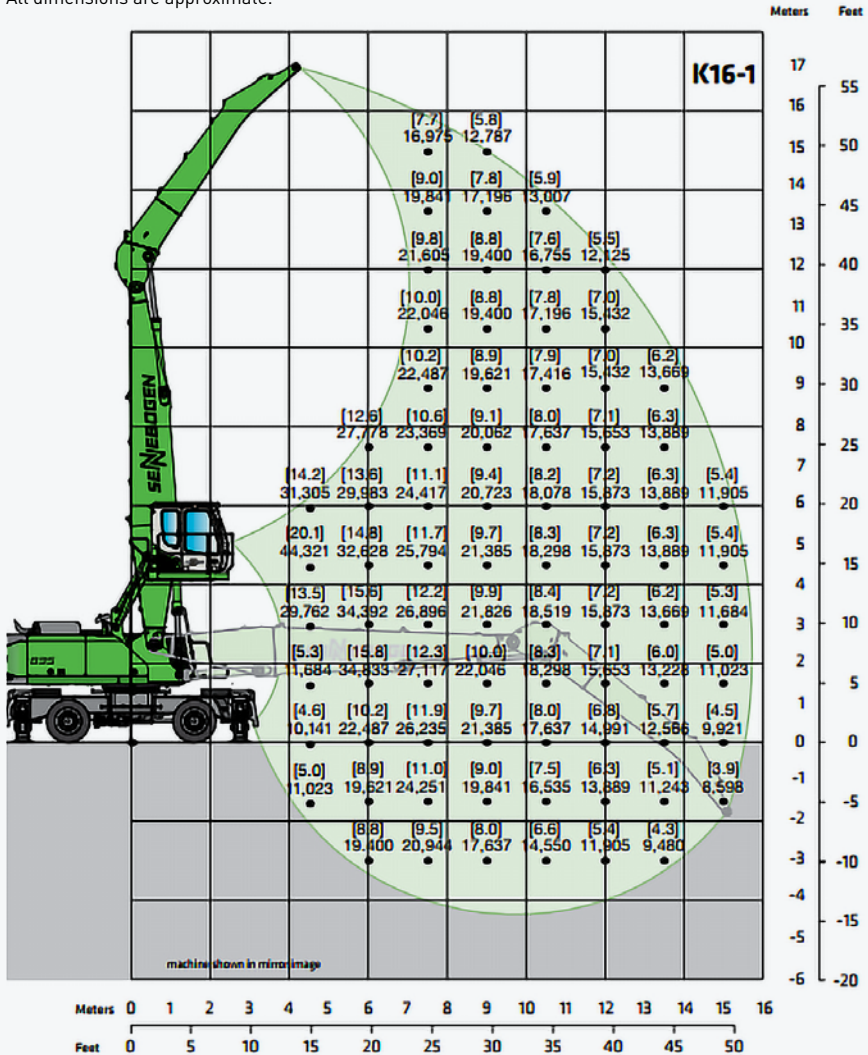
Reach	Boom Length	Stick Length	Transport Length	Transport Height H1*	Transport Width
K16-1	29'10" (9,100 mm)	22'8" (6,900 mm)	44'4" (13,500 mm)	11'4" (3,450 mm)	9'10" (3,000 mm)
K18-1	33'2" (10,100 mm)	25'11" (7,900 mm)	47'7" (14,500 mm)	11'4" (3,450 mm)	9'10" (3,000 mm)
B18-1	35'5" (10,800 mm)	25'11" (7,900 mm)	49'3" (15,000 mm)	11'4" (3,450 mm)	9'10" (3,000 mm)
K16-1 ULM	29'10" (9,100 mm)	21'8" (6,600 mm)	44'4" (13,500 mm)	11'4" (3,450 mm)	9'10" (3,000 mm)

transport dimensions valid for boom position 1 only • boom position 2 may increase transport height & transport length • handrails, catwalks & other accessories are disassembled for transportation • \*optional cab E300/260 will increase machine transport height by 2" (50 mm)

# EXCAVATOR SPECIFICATIONS

## LIFT CAPACITIES

All dimensions are approximate.



## REQUIRE THIS MACHINE FOR YOUR PROJECT?

Please contact us for a competitive quotation or for further information about our customized solutions. Feel free to give us a call **+31 251 26 44 44**, send us an e-mail [info@vantunen.nl](mailto:info@vantunen.nl) or visit [www.vantunen.nl](http://www.vantunen.nl)

# Experts in coastal development, earthmoving, rock works and mining

Van Tunen provides worldwide rental of heavy earthmoving equipment and technical project support services for the dredging, earthmoving and mining industry as well as the maritime sector. From harbour improvement to coastal protection, from pipeline works to demolition, depend on our team for solid advice, made-to-measure solutions and prompt support.

Get to know us, please visit:

[www.vantunen.nl](http://www.vantunen.nl)



#### Contact us

+31 251 26 44 44  
[info@vantunen.nl](mailto:info@vantunen.nl)  
[www.vantunen.nl](http://www.vantunen.nl)

#### Visit us

Zuiderkade 9  
1948 NG Beverwijk  
The Netherlands

#### About us

Registration nr. 34056786  
VAT nr. NL00 706 8797 B01