

WHEELLOADER

VAN TUNEN 950



Rather have the digital version? Go to:

WWW.VANTUNEN.NL/RENTAL

WHEELLOADER

BUCKET
 $\pm 2.5 - 9.2 \text{ m}^3$

EMPTY WEIGHT
 $\pm 19.5 \text{ TONS}$

OVERVIEW

The CAT 950 is well known as a reliable, productive and fuel efficient machine. It's performance is easily changeable with a full series of bucket, which are easy to load and improve material retention.

Do more jobs with one machine and equip this wheelloader with a.o.:

- Quick coupler
- Forks
- Sand bucket
- Skeleton buckets
- Rock buckets

ATTACHMENTS



PORTFOLIO



Working at: all over the world.

FACTS & FIGURES



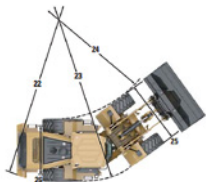
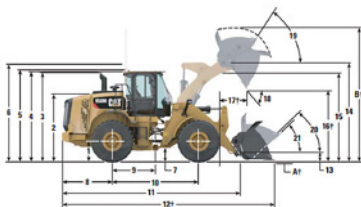
SPECIALTIES

- Technical Support Van Tunen
- Rock-, Sandtyres
- Customized attachments



DIMENSIONS

All dimensions are approximate and with Bucket.



	Standard Lift		High Lift	
1 Height to Axle Centerline	747 mm	25"	747 mm	25"
2 Height to Top of Hood	2678 mm	89"	2678 mm	89"
3 Height to Top of Exhaust Pipe	3427 mm	113"	3427 mm	113"
4 Height to Top of ROPS	3446 mm	114"	3446 mm	114"
5 Height to Top of Product Link Antenna	3653 mm	120"	3653 mm	120"
6 Height to Top of Warning Beacon	3747 mm	124"	3747 mm	124"
7 Ground Clearance	385 mm	13"	385 mm	13"
8 Center Line of Rear Axle to Edge of Counterweight	1942 mm	64"	1942 mm	64"
9 Center Line of Rear Axle to Hitch	1675 mm	56"	1675 mm	56"
10 Wheelbase	3350 mm	110"	3350 mm	110"
11 Overall Length (without bucket)	6906 mm	228"	7483 mm	247"
12 Shipping Length (with bucket level on ground)*†	8199 mm	2611"	8781 mm	2810"
13 Hinge Pin Height at Carry Height	647 mm	21"	782 mm	27"
14 Hinge Pin Height at Maximum Lift	4027 mm	133"	4527 mm	1410"
15 Lift Arm Clearance at Maximum Lift	3371 mm	110"	3740 mm	123"
16 Dump Clearance at Maximum Lift and 45° Discharge**	2876 mm	95"	3382 mm	111"
17 Reach at Maximum Lift and 45° Discharge*†	1430 mm	48"	1465 mm	410"
18 Dump Angle at Maximum Lift and Dump (on stops)*	51 degrees		48 degrees	
19 Rack Buck at Maximum Lift*	59 degrees		59 degrees	
20 Rack Buck at Carry Height*	49 degrees		49 degrees	
21 Rack Buck at Ground*	36 degrees		40 degrees	
22 Clearance Circle (diameter) to Counterweight	12 046 mm	397"	12 046 mm	397"
23 Clearance Circle (diameter) to Outside of Tires	12 002 mm	395"	12 002 mm	395"
24 Clearance Circle (diameter) to Inside of Tires	6465 mm	213"	6465 mm	213"
25 Width over Tires (unloaded)	2814 mm	93"	2814 mm	93"
Width over Tires (loaded)	2822 mm	93"	2822 mm	93"
26 Tread Width	2140 mm	70"	2140 mm	70"

*With 3.1 m³ (4.1 yd³) general purpose pin on bucket with BOCE (see Operating Specifications for other Buckets).

†Dimensions are listed in Operating Specification charts.

All height and tire related dimensions are with Michelin 23.5R25 XHA2 L3 radial tires (see Tire Option Chart for other tires).

**"Width Over Tires" dimensions are over the bulge and include growth.

GENERAL INFORMATION



INFO

Engine power	187KW 250hp
Bucket capacity	2.5-9.2m³
Fuel consumption	± 10-15 ltr/hr
Production	Contact us

SPECS

SHIPPING INFORMATION



TOOL

Shipping height	± 3.4m
Shipping Length	± 6.9m
Shipping width	± 2.8m
Ground clearance	± 0.38m
Breakout Force	± 189kN
Max. weight	± 19.5 tons

SPECS

SAFETY FIRST - QHSE



Product Safety has been and continues to be proactive in developing machines that meet or exceed safety standards. Safety is an integral part of all machines and system designs.

FOCUS ON QHSE

- Rotating strobe / flash light
- 3-points of contact access
- Back-up alarms with camera

SAFETY FEATURES

- Cab, pressurized and sound suppressed (ROPS/ FOPS)
- Door remote opening system
- Ergonomic cab access ladders and handrails
- Mirrors, heated rearview external with integrated spod mirrors
- Steering, EH joystick, speed sensing with force feedback
- Sun visor, rear
- Windows with full guards frond, rear and sides
- Lighting system:
 - Four halogen work lights (cab mounted)
 - Two LED stop, turn, tail lights
 - Two halogen roading lights (with signals)
 - Two halogen rear vision lights (hood mounted)
- Alarm, back-up
- Brakes, full hydraulic enclosed wet-disc with Integrated Braking System (IBS) incl. Brake wear indicators



REQUIRE THIS MACHINE FOR YOUR PROJECT?

Please contact us for a competitive quotation or for further information about our customized solutions. Feel free to give us a call **+31 251 26 44 44**, send us an e-mail info@vantunen.nl or visit www.vantunen.nl

Experts in coastal development, earthmoving, rock works and mining

Van Tunen provides worldwide rental of heavy earthmoving equipment and technical project support services for the dredging, earthmoving and mining industry as well as the maritime sector. From harbour improvement to coastal protection, from pipeline works to demolition, depend on our team for solid advice, made-to-measure solutions and prompt support.

Get to know us, please visit:

www.vantunen.nl



Contact us

+31 251 26 44 44
info@vantunen.nl
www.vantunen.nl

Visit us

Zuiderkade 9
1948 NG Beverwijk
The Netherlands

About us

Registration nr. 34056786
VAT nr. NL00 706 8797 B01