

WHEELLOADER

VAN TUNEN

966



Rather have the digital version? Go to:

WWW.VANTUNEN.NL/RENTAL

WHEELLOADER

BUCKET
 $\pm 2.5 - 9.2 \text{ m}^3$

OPERATING WEIGHT
 $\pm 24 \text{ TONS}$

OVERVIEW

The CAT966 was designed to improve operator comfort, performance, and productivity. The Performance Series Buckets enhance visibility and decrease cycle times.

Do more jobs with one machine and equip this wheelloader with a.o.:

- Quick coupler
- Forks
- Sand bucket
- Skeleton buckets
- Rock buckets

ATTACHMENTS



PORTFOLIO



Working at: In a ship / Rock works.

FACTS & FIGURES



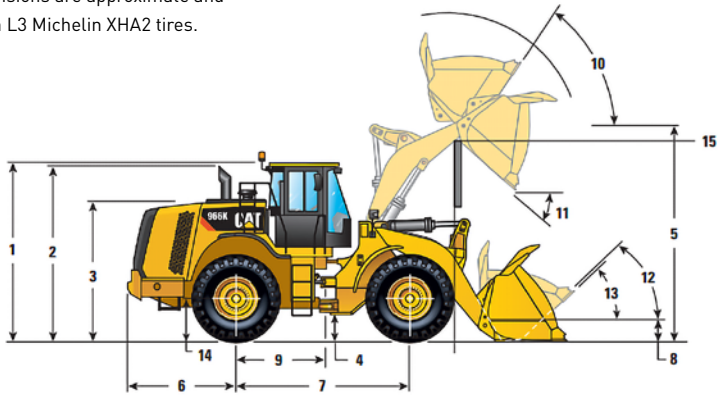
SPECIALTIES



- Technical Support Van Tunen
- Rock-, Sandtyres
- Customized attachments

DIMENSIONS

All dimensions are approximate and based on L3 Michelin XHA2 tires.



1	Height to Top of ROPS	3547 mm	11'7"
2	Height to Top of Exhaust Pipe	3518 mm	11'6"
3	Height to Top of Hood	2828 mm	9'3"
4	Ground Clearance With 26.5R25 (See Tire Option Chart for Other Tires)	475 mm	1'6"
5	B-Pin Height – Standard	4234 mm	13'10"
	B-Pin Height – High-Lift	4792 mm	15'8"
6	Center Line of Rear Axle to Edge of Counterweight	2187 mm	7'2"
7	Wheelbase	3450 mm	11'3"
8	B-Pin Height @ Carry – Standard	640 mm	2'1"
9	Center Line of Rear Axle to Hitch	1725 mm	5'7"
10	Rack Back @ Maximum Lift		62 degrees
11	Dump Angle @ Maximum Lift		49 degrees
12	Rack Back @ Carry		50 degrees
13	Rack Back @ Ground		42 degrees
14	Height to Center Line of Axle	798 mm	2'7"
15	Lift Arm Clearance	2862 mm	9'3"
	Lift Arm Clearance @ High Lift	4153 mm	13'6"

GENERAL INFORMATION



INFO	SPECS
Engine power	229KW 311hp
Bucket capacity	2.5-9.2m ³
Fuel consumption	± 15-22 ltr/hr
Production	Contact us

SHIPPING INFORMATION



TOOL	SPECS
Shipping height	± 3.5m
Shipping Length	± 8.2m
Shipping width	± 3.2m
Ground clearance	± 0.47m
Breakout Force	± 173kN
Max. weight	± 24 tons

SAFETY FIRST - QHSE



Product Safety has been and continues to be proactive in developing machines that meet or exceed safety standards. Safety is an integral part of all machines and system designs.

FOCUS ON QHSE

- Rotating strobe / flash light
- 3-points of contact access
- Back-up alarms with camera

SAFETY FEATURES

- Cab, pressurized and sound suppressed (ROPS/ FOPS)
- Door remote opening system
- Ergonomic cab access ladders and handrails
- Mirrors, heated rearview external with integrated spod mirrors
- Steering, EH joystick, speed sensing with force feedback
- Sun visor, rear
- Windows with full guards frond, rear and sides
- Lighting system:
 - Four halogen work lights (cab mounted)
 - Two LED stop, turn, tail lights
 - Two halogen roading lights (with signals)
 - Two halogen rear vision lights (hood mounted)
- Alarm, back-up
- Brakes, full hydraulic enclosed wet-disc with Integrated Braking System (IBS) incl. Brake wear indicators



REQUIRE THIS MACHINE FOR YOUR PROJECT?

Please contact us for a competitive quotation or for further information about our customized solutions. Feel free to give us a call **+31 251 26 44 44**, send us an e-mail info@vantunen.nl or visit www.vantunen.nl

Experts in coastal development, earthmoving, rock works and mining

Van Tunen provides worldwide rental of heavy earthmoving equipment and technical project support services for the dredging, earthmoving and mining industry as well as the maritime sector. From harbour improvement to coastal protection, from pipeline works to demolition, depend on our team for solid advice, made-to-measure solutions and prompt support.

Get to know us, please visit:

www.vantunen.nl



Contact us

+31 251 26 44 44
info@vantunen.nl
www.vantunen.nl

Visit us

Zuiderkade 9
1948 NG Beverwijk
The Netherlands

About us

Registration nr. 34056786
VAT nr. NL00 706 8797 B01