

WHELLOADER

# VAN TUNEN 980



Rather have the digital version? Go to:  
[WWW.VANTUNEN.NL/RENTAL](http://WWW.VANTUNEN.NL/RENTAL)

## WHELLOADER

BUCKET  
± 4.0 - 12.2 m<sup>3</sup>

OPERATING WEIGHT  
± 31 TONS

# OVERVIEW

## Reliability - ready to work!

The CAT980 features many of the components designed and proven reliable over generations of product design. This machine is designed to improve operator comfort, performance, and productivity. The Performance Series Buckets enhance visibility and decrease cycle times.

Do more jobs with one machine and equip this wheelloader with a.o.:

- Quick coupler
- Forks
- Sand bucket
- Skeleton buckets
- Rock buckets

## ATTACHMENTS



## PORTFOLIO



Working at: all over the world.

# FACTS & FIGURES



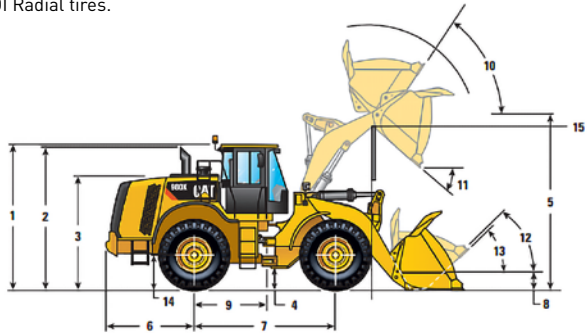
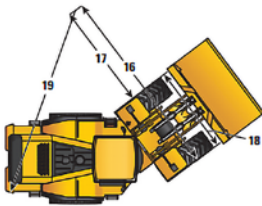
## SPECIALTIES

- Technical Support Van Tunen
- Rock-, Sandtyres
- Customized attachments



## DIMENSIONS

All dimensions are approximate and based on L4 Michelin 29.5R25 XLDDI Radial tires.



|   |            |        |
|---|------------|--------|
| 1 Height to Top of Rops   | 3809 mm    | 12'6"  |
| 2 Height to Top of Exhaust Pipe   | 3737 mm    | 12'4"  |
| 3 Height to Top of Hood   | 3109 mm    | 10'2"  |
| 4 Ground Clearance With 29.5R25 (See Tire Option Chart for Other Tires) | 460 mm     | 1'6"   |
| 5 B-Pin Height – Standard   | 4539 mm    | 14'11" |
| B-Pin Height – High-Lift  | 4760 mm    | 15'7"  |
| 6 Center Line of Rear Axle to Edge of Counterweight                     | 2510 mm    | 8'2"   |
| 7 Wheelbase   | 3700 mm    | 12'1"  |
| 8 B-Pin Height @ Carry – Standard                                       | 673 mm     | 2'0"   |
| 9 Center Line of Rear Axle to Hitch                                     | 1850 mm    | 6'1"   |
| 10 Rack Back @ Maximum Lift   | 61 degrees |        |
| 11 Dump Angle @ Maximum Lift  | 52 degrees |        |
| 12 Rack Back @ Carry  | 49 degrees |        |
| 13 Rack Back @ Ground   | 41 degrees |        |
| 14 Height to Center Line of Axle  | 885 mm     | 2'11"  |
| 15 Lift Arm Clearance   | 3795 mm    | 12'6"  |
| Lift Arm Clearance @ High Lift  | 4041 mm    | 13'4"  |

## GENERAL INFORMATION



| INFO             | SPECS                  |
|------------------|------------------------|
| Engine power     | 317KW   425hp          |
| Bucket capacity  | 4.0-12.2m <sup>3</sup> |
| Fuel consumption | ± 20-32 ltr/hr         |
| Production       | Contact us             |

## SHIPPING INFORMATION



| TOOL             | SPECS     |
|------------------|-----------|
| Shipping height  | ± 3.8m    |
| Shipping Length  | ± 9.8m    |
| Shipping width   | ± 3.3m    |
| Ground clearance | ± 0.46m   |
| Breakout Force   | ± 238kN   |
| Max. weight      | ± 31 tons |

## SAFETY FIRST - QHSE



Product Safety has been and continues to be proactive in developing machines that meet or exceed safety standards. Safety is an integral part of all machines and system designs.

### FOCUS ON QHSE

- Rotating strobe / flash light
- 3-points of contact access
- Back-up alarms with camera

### SAFETY FEATURES

- Cab, pressurized and sound suppressed (ROPS/ FOPS)
- Door remote opening system
- Ergonomic cab access ladders and handrails
- Mirrors, heated rearview external with integrated spod mirrors
- Steering, EH joystick, speed sensing with force feedback
- Sun visor, rear
- Windows with full guards front, rear and sides
- Lighting system:
  - Four halogen work lights (cab mounted)
  - Two LED stop, turn, tail lights
  - Two halogen roading lights (with signals)
  - Two halogen rear vision lights (hood mounted)
- Alarm, back-up
- Brakes, full hydraulic enclosed wet-disc with Integrated Braking System (IBS) incl. Brake wear indicators



### REQUIRE THIS MACHINE FOR YOUR PROJECT?

Please contact us for a competitive quotation or for further information about our customized solutions. Feel free to give us a call **+31 251 26 44 44**, send us an e-mail [info@vantunen.nl](mailto:info@vantunen.nl) or visit [www.vantunen.nl](http://www.vantunen.nl)

# Experts in coastal development, earthmoving, rock works and mining

Van Tunen provides worldwide rental of heavy earthmoving equipment and technical project support services for the dredging, earthmoving and mining industry as well as the maritime sector. From harbour improvement to coastal protection, from pipeline works to demolition, depend on our team for solid advice, made-to-measure solutions and prompt support.

Get to know us, please visit:

[www.vantunen.nl](http://www.vantunen.nl)



#### Contact us

+31 251 26 44 44  
info@vantunen.nl  
www.vantunen.nl

#### Visit us

Zuiderkade 9  
1948 NG Beverwijk  
The Netherlands

#### About us

Registration nr. 34056786  
VAT nr. NL00 706 8797 B01