

WHEELED EXCAVATOR

VAN TUNEN M318



Rather have the digital version? Go to:

WWW.VANTUNEN.NL/RENTAL

WHEELED EXCAVATOR

OPERATING WEIGHT
 ± 18 TONS

BUCKET
 $\pm 0.4 - 1.4 \text{ m}^3$

OVERVIEW

The Van Tunen M318 is here to help you take on the wide variety of challenges you face every day, more easily and with more pleasure. This machine is perfect for digging, loading, move/handle material and sort-and-load activities. To rent this machine with multiple attachments that help you do all kinds of jobs, you simply won't find a better machine.

PORTFOLIO



Heavy Duty Axles Long life with effective heavy duty axles. The transmission is mounted directly on the rear axle for protection and optimum ground clearance. The front axle offers wide oscillating and steering angles. Advanced Disc Brake System Minimizes the rocking effect when working free on wheels.

ATTACHMENTS

BUCKET

- GP bucket
- Skeleton bucket
- Ditch cleaning bucket
- Size: $\pm 0.4 \sim 1.4\text{m}^3$



ROTOTILT



ORANGE PEEL GRAB

- Closed (environmental) or regular
- Size: $\pm 0.6 \sim 0.8\text{m}^3$



EXTENDER (HYDRAULIC)

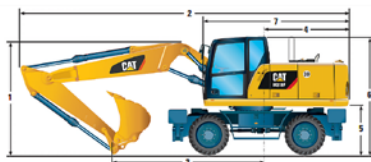
Please note that we have a lot of attachments for this machine. We are always there to advise you to our best ability to have right equipment at your project!

FACTS & FIGURES



DIMENSIONS

All dimensions are approximate.



		VA Boom				One-Piece Boom				Offset Boom	
		2100	2400	2600	3100*	2100	2400	2600	3100*	2100	2400
Stick Length	mm (ft/in)	6'11"	7'10"	8'6"	10'2"	6'11"	7'10"	8'6"	10'2"	6'11"	7'10"
1 Shipping Height with Falling Object Guard and Handrails Lowered (highest point between boom and cab)	mm (ft/in)	3305 (10'10")	3305 (10'10")	3330 (10'11")	3305 (10'10")	3305 (10'10")	3330 (10'11")	3305 (10'10")	3305 (10'10")	3305 (10'10")	3305 (10'10")
2 Shipping Length	mm (ft/in)	8610 (28'3")	8610 (28'3")	8600 (28'3")	8580 (28'2")	8450 (27'9")	8460 (27'9")	8460 (27'9")	8480 (27'10")	8600 (28'3")	8560 (28'1")
3 Support Point	mm (ft/in)	3910 (12'10")	3650 (12'0")	3550 (11'8")	3640 (11'11")	3560 (11'8")	3270 (10'9")	3150 (10'4")	3220 (10'7")	4010 (13'2")	3770 (12'4")
4 Tail Swing Radius	mm (ft/in)					2300 (7'6")					
5 Counterweight Clearance	mm (ft/in)					1280 (4'2")					
6 Cab Height - No Falling Object Guard, Handrails Lowered	mm (ft/in)					3190 (10'6")					
With Handrails not Lowered	mm (ft/in)					3270 (10'9")					
With Falling Object Guard	mm (ft/in)					3305 (10'10")					
7 Overall Machine Width											
Standard Axle	mm (ft/in)					2550 (8'4")					
Wide Gauge Axle	mm (ft/in)					2750 (9'0")					

*3100 mm (10'2") industrial stick will be available in 2015.



** Maximum tire clearance with outrigger fully down

GENERAL INFORMATION



INFO	SPECS
Engine power	105KW 141hp
VA baseboom reach	9.5mm
VA Digging depth	6.0m
Fuel consumption	± 10-12 ltr/hr
Production	Contact us

SHIPPING INFORMATION



TOOL	SPECS
Shipping height	± 3.3m
Shipping Length	± 8.6m
Shipping width	± 2.5m
Width + outrigger	± 3.7m
Ground clearance	± 0.37m
Weight	± 18 tons

SPECIALTIES

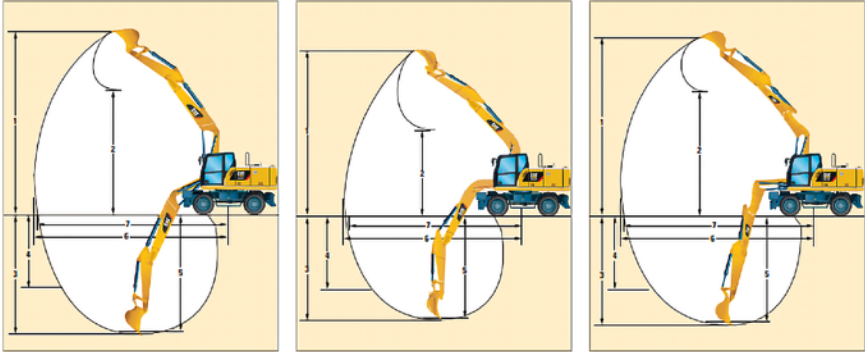


- Technical Support Van Tunen
- Safety check valves on boom, VA & stick cylinders
- Medium pressure function (rotator)
- High Pressure hydraulic function hamer / shear
- Blade + outriggers
- GPS / Survey on request

EXCAVATOR SPECIFICATIONS

WORKING RANGES

All dimensions are approximate.



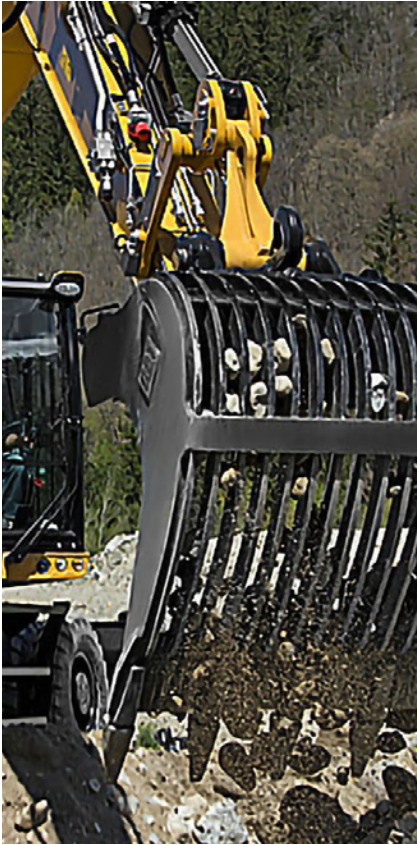
		VA Boom				One-Piece Boom				Offset Boom	
		2100 (6'11")	2400 (7'10")	2600 (8'6")	3100* (10'2")	2100 (6'11")	2400 (7'10")	2600 (8'6")	3100* (10'2")	2100 (6'11")	2400 (7'10")
Stick Length	mm (ft/in)										
1 Digging Height	mm (ft/in)	10 090 (33'1")	10 275 (33'9")	10 435 (34'3")	8970 (29'5")	9045 (29'8")	9140 (30'0")	9255 (30'4")	7720 (25'4")	10 125 (33'3")	10 320 (33'10")
2 Dump Height	mm (ft/in)	6945 (22'9")	7135 (23'5")	7265 (23'10")	3980 (13'1")	6000 (19'8")	6110 (20'1")	6225 (20'5")	3200 (10'6")	6980 (22'11")	7175 (23'6")
3 Digging Depth	mm (ft/in)	5595 (18'4")	5890 (19'4")	6090 (20'0")	5030 (16'6")	5390 (17'8")	5690 (18'8")	5890 (19'4")	4820 (15'10")	5600 (18'4")	5895 (19'4")
4 Vertical Wall Digging Depth	mm (ft/in)	4365 (14'4")	4600 (15'1")	4780 (15'8")	—	4490 (14'9")	4665 (15'4")	4845 (15'11")	—	4410 (14'6")	4650 (15'3")
5 Depth 2.5 m (8'2") in Straight Clean-Up	mm (ft/in)	5485 (18'0")	5785 (19'0")	5985 (19'8")	—	5170 (17'0")	5490 (18'0")	5700 (18'8")	—	5490 (18'0")	5790 (19'0")
6 Reach	mm (ft/in)	9120 (29'11")	9385 (30'9")	9580 (31'5")	8370 (27'6")	8920 (29'3")	9175 (30'1")	9365 (30'9")	8130 (26'8")	9135 (30'0")	9405 (30'10")
7 Reach at Ground Level	mm (ft/in)	8935 (29'4")	9210 (30'3")	9405 (30'10")	8170 (26'10")	8730 (28'8")	8995 (29'6")	9190 (30'2")	7920 (26'0")	8950 (29'4")	9225 (30'3")
Bucket Forces (ISO 6015)	kN (lbf)	101 (22,705)				101 (22,705)				101 (22,705)	
Stick Forces (ISO 6015)	kN (lbf)	81 (8,209)	74 (16,635)	71 (15,961)	—	81 (8,209)	74 (16,635)	71 (15,961)	—	81 (8,209)	74 (16,635)

Range values are calculated with GD Bucket, 1200 mm (48 in), 0.91 m³ (1.19 yd³) with tips K080 and CW-20-H4.N. quick coupler with a tip radius of 1574 mm (5'2").

Bucket and Stick force values are calculated with heavy lift on (no quick coupler) and a tip radius of 1404 mm (4'7").

*3100 mm (10'2") industrial stick will be available in 2015. Industrial stick has no bucket linkage. All dimensions refer to stick nose.

SAFETY FIRST - QHSE



EMBEDDED FEATURES

Smart devices are embedded to offer as much safety as possible for your operators and help enforce safe behavior:

- Safety seat belt and warning indicators (monitor)
- Automatic swing lock
- Automatic brake and axle lock
- Safety lever, preventing exit when the implements are not locked out
- Emergency shut off switch and battery disconnect switch
- Travel alarm
- Lowering check valves

SAFE AND QUIET CAB

The all-new cab provides you with a safe environment. It also contributes to your comfort with limited vibrations and low sound levels.

Access into the cab of a wheeled excavator has always been a challenge. We bring a solution to allow you to safely climb into the cab:

- Three longer access steps, aligned with the cab entry
- Anti-skid plates on all walkways and steps reducing slipping hazards
- New, convenient door handrail
- Safety lever built into the tilttable console to make sure the way in and out is free of obstacle

VISIBILITY ALL AROUND IS CRITICAL

- Increased skylight and windshield glass area
- Improved lighting with standard LED lights for all working lights
- Mirrors, wide angle, with additional lower mirror for ground visibility
- Halogen front roading lights | Reflecting red lights
- Reflecting red lights on rear and blade/ outriggers
- Back up alarm - camera's



REQUIRE THIS MACHINE FOR YOUR PROJECT?

Please contact us for a competitive quotation or for further information about our customized solutions. Feel free to give us a call **+31 251 26 44 44**, send us an e-mail **info@vantunen.nl** or visit **www.vantunen.nl**

Experts in coastal development, earthmoving, rock works and mining

Van Tunen provides worldwide rental of heavy earthmoving equipment and technical project support services for the dredging, earthmoving and mining industry as well as the maritime sector. From harbour improvement to coastal protection, from pipeline works to demolition, depend on our team for solid advice, made-to-measure solutions and prompt support.

Get to know us, please visit:

www.vantunen.nl



Contact us

+31 251 26 44 44
info@vantunen.nl
www.vantunen.nl

Visit us

Zuiderkade 9
1948 NG Beverwijk
The Netherlands

About us

Registration nr. 34056786
VAT nr. NL00 706 8797 B01