

WHEELED EXCAVATOR

# VAN TUNEN M320



Rather have the digital version? Go to:

[WWW.VANTUNEN.NL/RENTAL](http://WWW.VANTUNEN.NL/RENTAL)

## WHEELED EXCAVATOR

OPERATING WEIGHT  
 $\pm 20$  TONS

BUCKET  
 $\pm 0.4 - 1.6 \text{ m}^3$

# OVERVIEW

The Van Tunen M320 does not only give you all the versatility you need, but it does so while providing a great deal of precision and speed with an absolute minimum fuel consumption and zero impact on your efficiency. This machine is perfect for digging, loading, move/handle material and sort-and-load activities. To rent this machine with multiple attachments that help you do all kinds of jobs, you simply won't find a better machine.

## PORTFOLIO



**Heavy Duty Axles** Long life with effective heavy duty axles. The transmission is mounted directly on the rear axle for protection and optimum ground clearance. The front axle offers wide oscillating and steering angles. **Advanced Disc Brake System** Minimizes the rocking effect when working free on wheels.

## ATTACHMENTS

### BUCKET

- GP bucket
- Skeleton bucket
- Ditch cleaning bucket
- Size:  $\pm 0.4 \sim 1.6\text{m}^3$



### ROTOTILT



### ORANGE PEEL GRAB

- Closed (environmental) or regular
- Size:  $\pm 0.6 \sim 0.8\text{m}^3$



### EXTENDER (HYDRAULIC)

Please note that we have a lot of attachments for this machine. We are always there to advise you to our best ability to have right equipment at your project!

# FACTS & FIGURES



## SPECIALTIES

- Technical Support Van Tunen
- Safety check valves on boom, VA & stick cylinders
- Medium pressure function (rotator)
- High Pressure hydraulic function hamer / shear
- Blade + outriggers
- GPS / Survey on request



## DIMENSIONS

All dimensions are approximate.



Stick Length	mm (ft/in)	Variable Adjustable Boom			One-Piece Boom		
		2500 (8'2")	2800 (9'2")	3300* (10'10")	2500 (8'2")	2800 (9'2")	3300* (10'10")
1 Shipping Height with Guard Falling Object and Handrails Lowered (highest point between boom and cab)	mm (ft/in)	3330 (10'11")			3320 (10'11")	3290 (10'10")	
2 Shipping Length	mm (ft/in)	9025 (29'7")	9025 (29'7")	8920 (29'3")	8915 (29'3")	8890 (29'2")	9065 (29'9")
3 Support Point	mm (ft/in)	3495 (11'6")	3315 (10'11")	3270 (10'9")	3640 (11'11")	3500 (11'6")	3070 (10'1")
4 Tail Swing Radius	mm (ft/in)	2570 (8'5")					
5 Counterweight Clearance	mm (ft/in)	1280 (4'2")					
6 Cab Height – No Guard Falling Object, Handrails Lowered	mm (ft/in)	3190 (10'6")					
With Handrails not Lowered	mm (ft/in)	3260 (10'9")					
With Guard Falling Object	mm (ft/in)	3320 (10'11")					
7 Overall Machine Width							
Standard Axle	mm (ft/in)	2550 (8'4")					
Wide Gauge Axle	mm (ft/in)	2750 (9'0")					

\*Industrial Stick. Available from 2015.



\*\* Maximum tire clearance with outrigger fully down

## GENERAL INFORMATION



INFO	SPECS
Engine power	105KW   141hp
VA baseboom reach	9.7mm
VA Digging depth	6.2m
Fuel consumption	± 12-14 ltr/hr
Production	Contact us

## SHIPPING INFORMATION

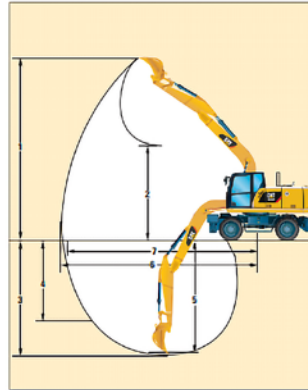
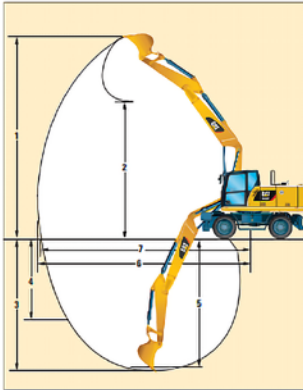


TOOL	SPECS
Shipping height	± 3.3m
Shipping Length	± 9.0m
Shipping width	± 2.5m
Width + outrigger	± 3.7m
Ground clearance	± 0.37m
Weight	± 20 tons

# EXCAVATOR SPECIFICATIONS

## WORKING RANGES

All dimensions are approximate.



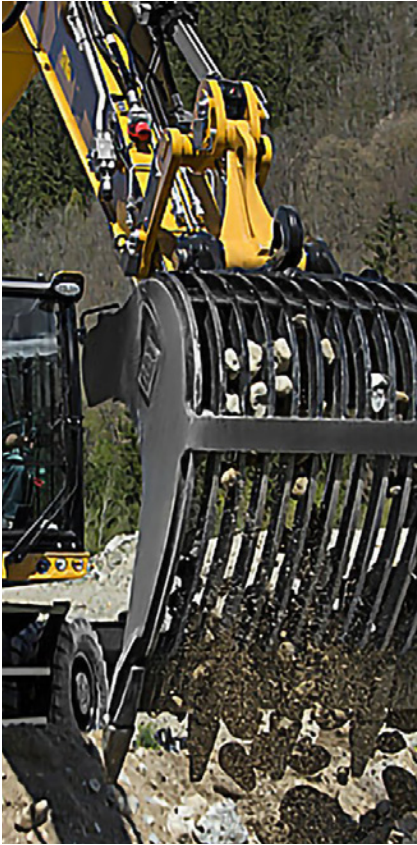
Stick Length	mm (ft/in)	Variable Adjustable Boom			One-Piece Boom		
		2500 (8'2")	2800 (9'2")	3300* (10'10")	2500 (8'2")	2800 (9'2")	3300* (10'10")
1 Digging Height	mm (ft/in)	9950 (32'8")	10 165 (33'4")	8970 (29'5")	8940 (29'4")	9095 (29'10")	7720 (25'4")
2 Dump Height	mm (ft/in)	6970 (22'10")	7180 (23'7")	3980 (13'1")	6140 (20'2")	6290 (20'8")	3200 (10'6")
3 Digging Depth	mm (ft/in)	6035 (19'10")	6330 (20'9")	5030 (16'6")	5980 (19'7")	6280 (20'7")	4820 (15'10")
4 Vertical Wall Digging Depth	mm (ft/in)	4230 (13'11")	4510 (14'10")	—	3935 (12'11")	4225 (13'10")	—
5 Depth 2.5 m (8'2") in Straight Clean-Up	mm (ft/in)	5930 (19'5")	6235 (20'5")	—	5755 (18'11")	6070 (19'11")	—
6 Reach	mm (ft/in)	9450 (31'0")	9735 (31'11")	8370 (27'6")	9470 (31'1")	9750 (32'0")	8130 (26'8")
7 Reach at Ground Level	mm (ft/in)	9270 (30'5")	9565 (31'5")	8170 (26'10")	9295 (30'6")	9580 (31'5")	7920 (26'0")
Bucket Forces (ISO 6015)	kN (lbf)	122 (22,427)			122 (22,427)		
Stick Forces (ISO 6015)	kN (lbf)	91 (20,458)	84 (18,884)	—	91 (20,458)	84 (18,884)	—

Range values are calculated with GD Bucket, 1200 mm (48 in), 0.98 m<sup>3</sup> (1.28 yd<sup>3</sup>) with tips K080 and CW-30-H.A.N. quick coupler with a tip radius of 1535 mm (5'0").

Bucket and Stick force values are calculated with heavy lift on (no quick coupler) and a tip radius of 1462 mm (4'10").

\*Industrial stick has no bucket linkage. All dimensions refer to stick nose.

# SAFETY FIRST - QHSE



## EMBEDDED FEATURES

Smart devices are embedded to offer as much safety as possible for your operators and help enforce safe behavior:

- Safety seat belt and warning indicators (monitor)
- Automatic swing lock
- Automatic brake and axle lock
- Safety lever, preventing exit when the implements are not locked out
- Emergency shut off switch and battery disconnect switch
- Travel alarm
- Lowering check valves

## SAFE AND QUIET CAB

The all-new cab provides you with a safe environment. It also contributes to your comfort with limited vibrations and low sound levels.

**Access into the cab** of a wheeled excavator has always been a challenge. We bring a solution to allow you to safely climb into the cab:

- Three longer access steps, aligned with the cab entry
- Anti-skid plates on all walkways and steps reducing slipping hazards
- New, convenient door handrail
- Safety lever built into the tilttable console to make sure the way in and out is free of obstacle

## VISIBILITY ALL AROUND IS CRITICAL

- Increased skylight and windshield glass area
- Improved lighting with standard LED lights for all working lights
- Mirrors, wide angle, with additional lower mirror for ground visibility
- Halogen front roading lights | Reflecting red lights
- Reflecting red lights on rear and blade/ outriggers
- Back up alarm - camera's





### REQUIRE THIS MACHINE FOR YOUR PROJECT?

Please contact us for a competitive quotation or for further information about our customized solutions. Feel free to give us a call **+31 251 26 44 44**, send us an e-mail **info@vantunen.nl** or visit **[www.vantunen.nl](http://www.vantunen.nl)**

# Experts in coastal development, earthmoving, rock works and mining

Van Tunen provides worldwide rental of heavy earthmoving equipment and technical project support services for the dredging, earthmoving and mining industry as well as the maritime sector. From harbour improvement to coastal protection, from pipeline works to demolition, depend on our team for solid advice, made-to-measure solutions and prompt support.

Get to know us, please visit:

[www.vantunen.nl](http://www.vantunen.nl)



#### Contact us

+31 251 26 44 44  
[info@vantunen.nl](mailto:info@vantunen.nl)  
[www.vantunen.nl](http://www.vantunen.nl)

#### Visit us

Zuiderkade 9  
1948 NG Beverwijk  
The Netherlands

#### About us

Registration nr. 34056786  
VAT nr. NL00 706 8797 B01